

Purgeables Analysis Without Cryofocusing (EPA Method 502.2)

Column: DB-VRX
75 m x 0.45 mm I.D., 2.55 µm

J&W P/N: 124-1574

Carrier: Helium at 10 mL/min, measured at 35°C

Oven: 35°C for 12 min
 35-60°C at 5°/min
 60°C for 1 min
 60-200°C at 17°/min
 200°C for 3 min

Injector: Purge and trap (Tekmar® LSC 2000 with moisture control module)
 J&W LVI (Low Volume Injector)
 20 ppb per compound in 5 mL water
 VOCARB 4000

Trap: 240°C

Preheat: 245°C

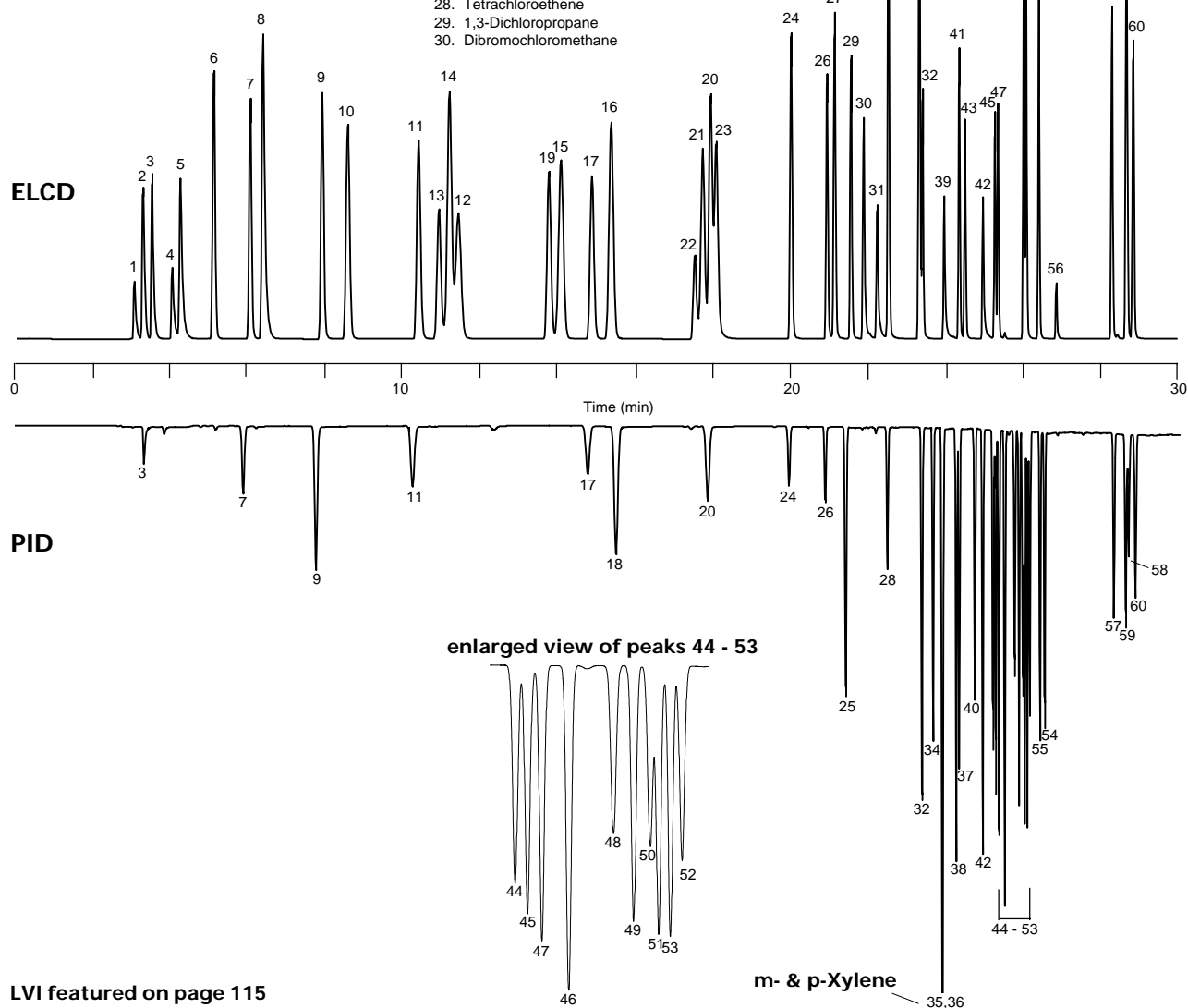
Desorb: 245°C

Detector A: PID (O.I.A. 4430), 200°C
 Helium makeup gas at 30 mL/min

Detector B: ELCD (O.I.A. 4420), with NiCat reaction tube in the halogen mode, 950°C reactor temperature

- | | | |
|---------------------------------------|-------------------------------|---------------------------------|
| 1. Dichlorodifluoromethane | 31. 1,2-Dibromoethane | 46. 1,3,5-Trimethylbenzene |
| 2. Chloromethane | 32. Chlorobenzene | 47. 4-Chlorotoluene |
| 3. Vinyl chloride | 33. 1,1,1,2-Tetrachloroethane | 48. <i>tert</i> -Butylbenzene |
| 4. Bromomethane | 34. Ethylbenzene | 49. 1,2,4-Trimethylbenzene |
| 5. Chloroethane | 35. <i>m</i> -Xylene | 50. <i>sec</i> -Butylbenzene |
| 6. Trichlorofluoromethane | 36. <i>p</i> -Xylene | 51. 1,3-Dichlorobenzene |
| 7. 1,1-Dichloroethene | 37. <i>o</i> -Xylene | 52. <i>p</i> -Isopropyltoluene |
| 8. Methylene chloride | 38. Styrene | 53. 1,4-Dichlorobenzene |
| 9. <i>trans</i> -1,2-Dichloroethene | 39. Bromoform | 54. <i>n</i> -Butylbenzene |
| 10. 1,1-Dichloroethane | 40. Isopropylbenzene | 55. 1,2-Dichlorobenzene |
| 11. <i>cis</i> -1,2-Dichloroethene | 41. 1,1,2,2-Tetrachloroethane | 56. 1,2-Dibromo-3-chloropropane |
| 12. 2,2-Dichloropropane | 42. Bromobenzene | 57. 1,2,4-Trichlorobenzene |
| 13. Bromochloromethane | 43. 1,2,3-Trichloropropane | 58. Hexachlorobutadiene |
| 14. Chloroform | 44. <i>n</i> -Propylbenzene | 59. Naphthalene |
| 15. 1,1,1-Trichloroethane | 45. 2-Chlorotoluene | 60. 1,2,3-Trichlorobenzene |
| 16. Carbon tetrachloride | | |
| 17. 1,1-Dichloropropane | | |
| 18. Benzene | | |
| 19. 1,2-Dichloroethane | | |
| 20. Trichloroethene | | |
| 21. 1,2-Dichloropropane | | |
| 22. Dibromomethane | | |
| 23. Bromodichloromethane | | |
| 24. <i>cis</i> -1,3-Dichloropropene | | |
| 25. Toluene | | |
| 26. <i>trans</i> -1,3-Dichloropropene | | |
| 27. 1,1,2-Trichloroethane | | |
| 28. Tetrachloroethene | | |
| 29. 1,3-Dichloropropane | | |
| 30. Dibromochloromethane | | |

Method 502 standards are found on pages 128-131



LVI featured on page 115