

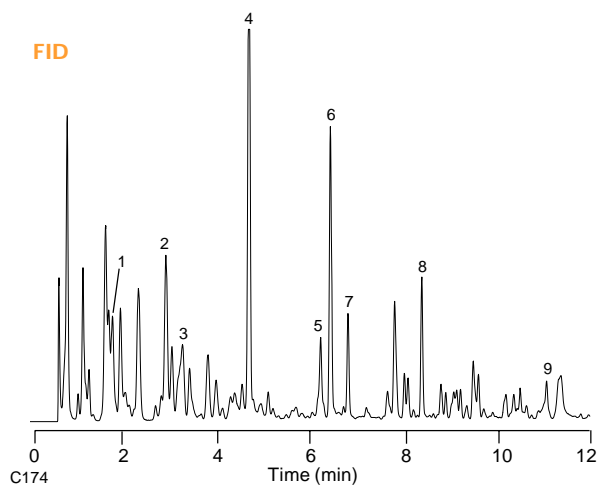
## Unleaded Gasoline

**Column:** DB-VRX  
30 m x 0.45 mm I.D., 2.55  $\mu$ m  
**J&W P/N:** 124-1534  
**Carrier:** Helium at 109 cm/sec (10.4 mL/min), measured at 40°C  
**Oven:** 40°C for 2 min  
40-200°C at 12°/min  
200°C for 5 min  
**Injector:** Purge and trap (O.I.A. 4460A)  
J&W LVI (Low Volume Injector)  
115 ppb gasoline in 5 mL water  
**Trap:** BTEX (Supelco) at 50°C during purge  
**Desorb:** 1 min at 270°C

**Detector A:** PID (O.I.A. 4430), 200°C  
**Detector B:** FID, 250°C

1. 3-Methylpentane
2. Benzene
3. Isooctane
4. Toluene
5. Ethylbenzene
6. *m,p*-Xylene
7. *o*-Xylene
8. 1,2,4-Trimethylbenzene
9. Naphthalene

FID



PID

