

# Environmental — Hydrocarbons

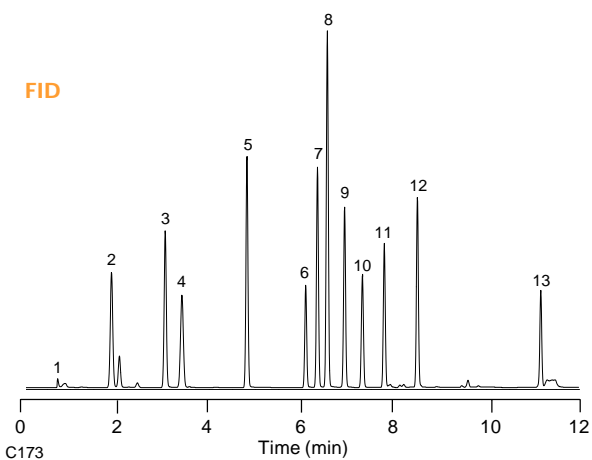
## BTEX Standard

LVI featured on page 115

**Column:** DB-VRX  
30 m x 0.45 mm I.D., 2.55  $\mu$ m  
**J&W P/N:** 124-1534  
**Carrier:** Helium at 10.4 mL/min (109 cm/sec), measured at 40°C  
**Oven:** 40°C for 2 min  
40-200°C at 12°/min  
200°C for 5 min  
**Injector:** Purge and trap (O.I.A. 4460A)  
J&W LVI (Low Volume Injector)  
20 ppb per component in 5 mL water  
**Trap:** BTEX (Supelco) at 50°C during purge  
**Desorb:** 1 min at 270°C  
**Detector A:** PID (O.I.A. 4430), 10 eV lamp, 200°C  
**Detector B:** FID, 250°C

1. Methanol
2. 3-Methylpentane
3. Benzene
4. Isooctane
5. Toluene
6. Chlorobenzene (IS)
7. Ethylbenzene
8. *m,p*-Xylene
9. *o*-Xylene
10. Isopropylbenzene (cumene, IS)
11. 4-Chlorotoluene (IS)
12. 1,2,4-Trimethylbenzene
13. Naphthalene

## FID



## PID

