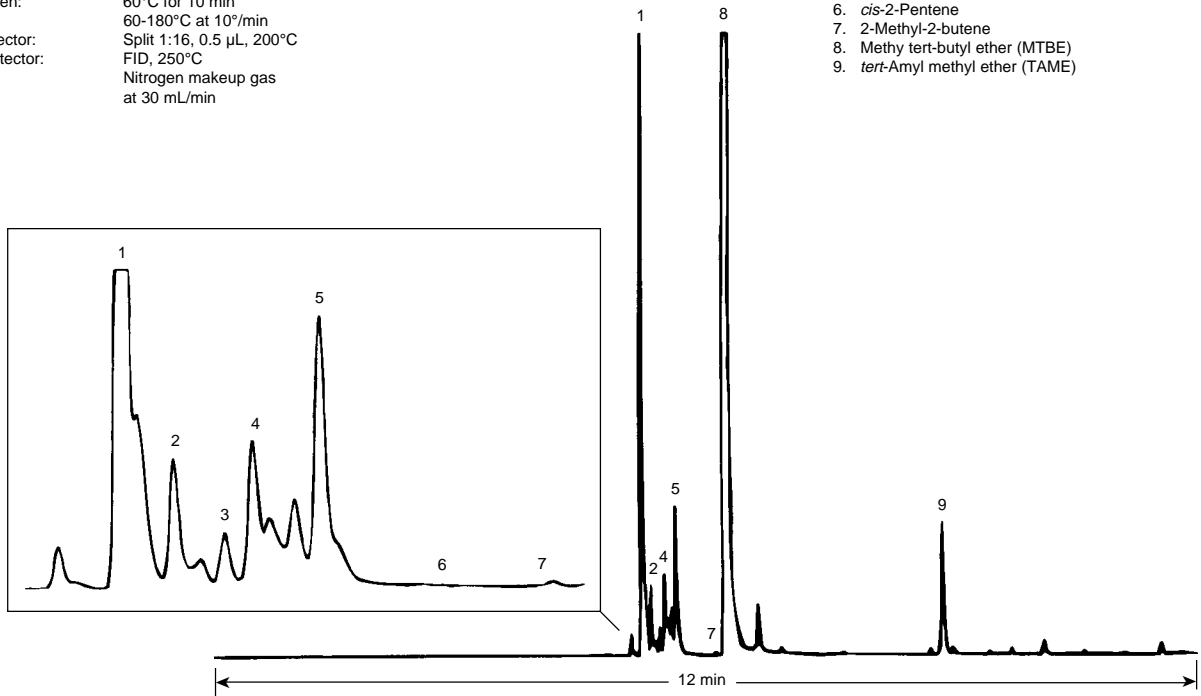


Crude MTBE

Column: DB-Petro100
100 m x 0.25 mm I.D., 0.5 µm
J&W P/N: 122-10A6
Carrier: Helium at 22.5 cm/sec, measured at 60°C
Oven: 60°C for 10 min
60-180°C at 10°/min
Injector: Split 1:16, 0.5 µL, 200°C
Detector: FID, 250°C
Nitrogen makeup gas
at 30 mL/min

1. Isopentane
2. Pentene-1
3. *n*-Pentane
4. *trans*-2-Pentene
5. *tert*-Butanol
6. *cis*-2-Pentene
7. 2-Methyl-2-butene
8. Methyl *tert*-butyl ether (MTBE)
9. *tert*-Amyl methyl ether (TAME)



C164