

## Petroleum Naphtha

**Column:** DB-1  
40 m x 0.18 mm I.D., 0.4 µm

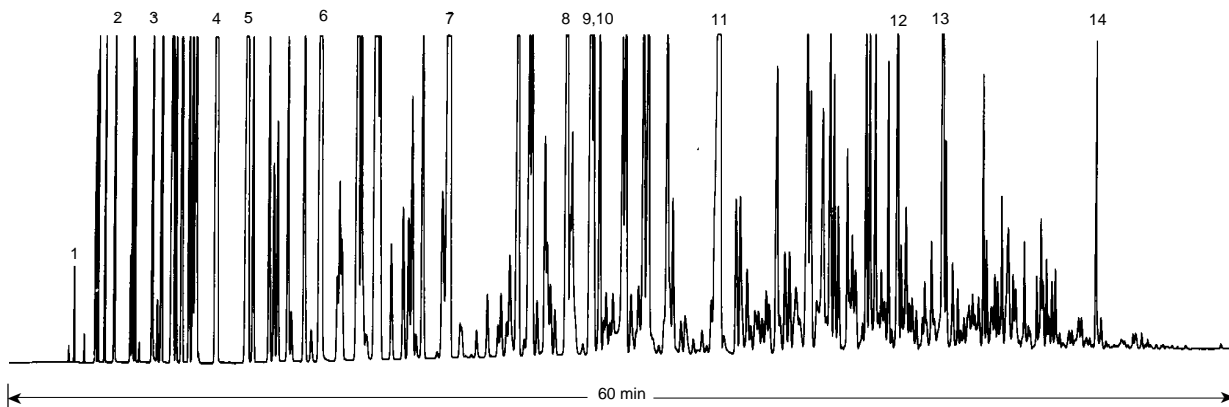
**J&W P/N:** 121-1043  
**Carrier:** Helium at 25 cm/sec,  
measured at 35°C

**Oven:** 35°C for 15 min  
35-70°C at 1.5°/min  
70-130°C at 30°/min  
130°C for 20 min

**Injector:** Split 1:200, 0.5 µL, 250°C

**Detector:** FID, 300°C  
Nitrogen makeup gas at 30 mL/min

1. *n*-Pentane
2. *n*-Hexane
3. Benzene
4. *n*-Heptane
5. Methylcyclohexane
6. Toluene
7. *n*-Octane
8. Ethylbenzene
9. *m*-Xylene, *p*-Xylene
10. *o*-Xylene
11. *n*-Nonane
12. 1,2,4-Trimethylbenzene
13. *n*-Decane
14. *n*-Undecane



C163