

Sulfur Hexafluoride

Column: GS-Molesieve
30 m x 0.53 mm I.D.

J&W P/N: 115-3632

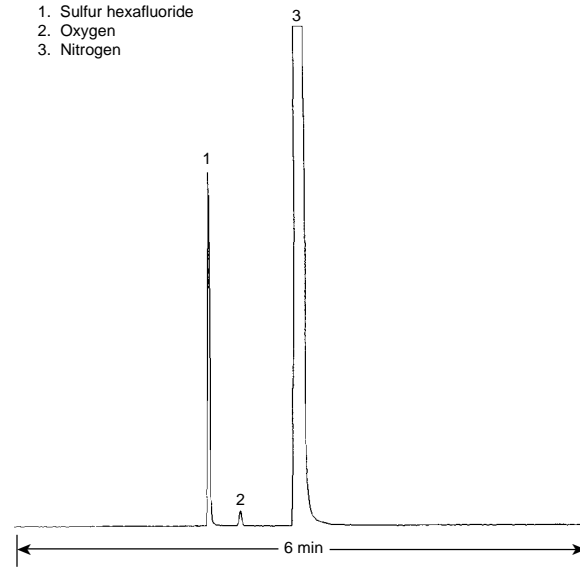
Carrier: Helium at 35 cm/sec (4.6 mL/min)

Oven: 50°C isothermal

Injector: Split 1:12, 100 µL, 100°C

Detector: TCD, 125°C
Helium makeup gas at 10 mL/min

1. Sulfur hexafluoride
2. Oxygen
3. Nitrogen



C161