

Noble Gases

Column: GS-Molesieve

30 m x 0.53 mm I.D.

J&W P/N: 115-3632

Carrier: Helium at 35 cm/sec (4.6 mL/min)

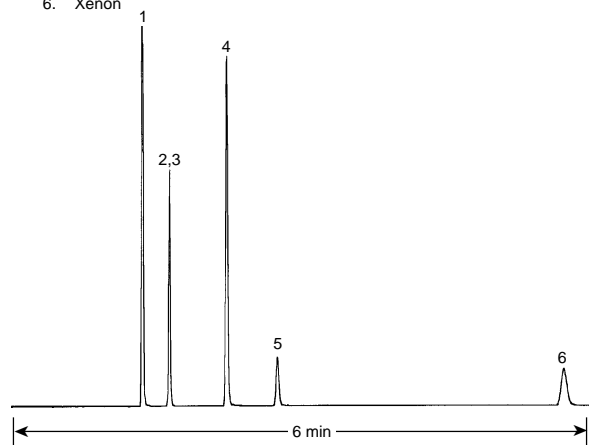
Oven: 50°C isothermal

Injector: Split 1:12, 40 µL, 100°C

Detector: TCD, 125°C

Helium makeup gas at 10 mL/min

1. Neon
2. Oxygen
3. Argon
4. Nitrogen
5. Krypton
6. Xenon



C159