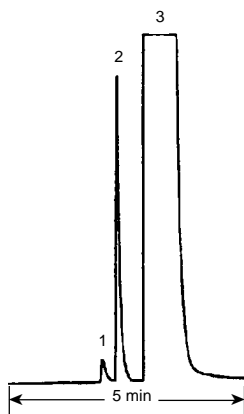


Ethylene

Column: GS-Alumina
30 m x 0.53 mm I.D.
J&W P/N: 115-3532
Carrier: Helium at 8.25 mL/min
Oven: 40°C isothermal
Injector: Megabore Direct, 30 µL, 250°C
Detector: FID, 250°C
Nitrogen makeup gas at 30 mL/min

1. Methane
2. Ethane
3. Ethylene



C151