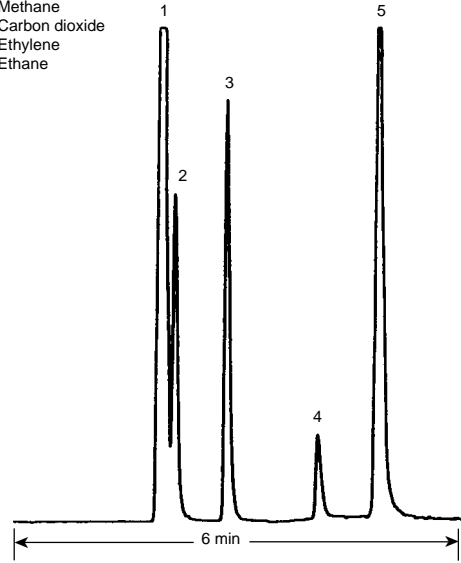


## Air, Carbon Dioxide, C<sub>1</sub> and C<sub>2</sub>

**Column:** GS-Q  
30 m x 0.53 mm I.D.  
**J&W P/N:** 115-3432  
**Carrier:** Hydrogen at 4 mL/min  
**Oven:** 30°C for 3 min  
30-80°C at 20°/min  
**Injector:** Split 1:10, 250°C  
**Detector:** TCD, 250°C

1. Air
2. Methane
3. Carbon dioxide
4. Ethylene
5. Ethane



C149