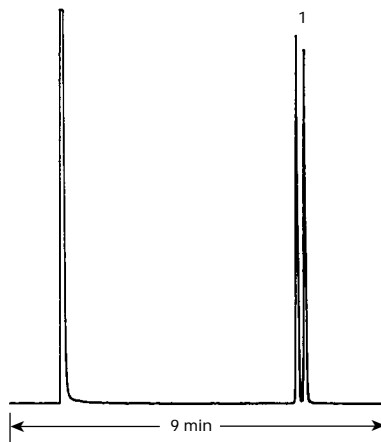


Ethosuximide

Column: Cyclodex-B
30 m x 0.25 mm I.D., 0.25 μ m
J&W P/N: 112-2532
Carrier: Hydrogen at 37 cm/sec
Oven: 160°C isothermal
Injector: Split 1:90, 250°C
1 μ L of 5 μ g/ μ L in methanol
Detector: FID, 300°C
Nitrogen makeup gas at 30 mL/min

1. (\pm)-Ethosuximide



C127