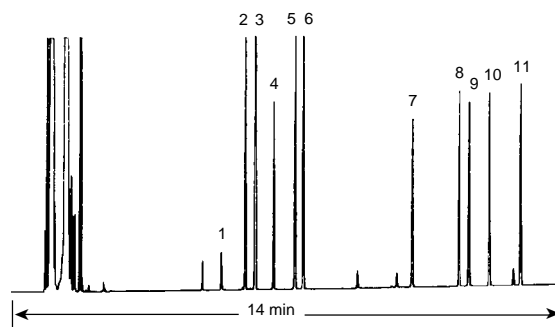


## Amphetamines - TFA Derivatives

**Column:** DB-5  
20 m x 0.18 mm I.D., 0.4 µm  
**J&W P/N:** 121-5023  
**Carrier:** Helium at 39 cm/sec  
**Oven:** 100-240°C at 10°/min  
**Injector:** Split 1:100, 250°C  
1 µL of 0.25 µg/µL each in toluene  
**Detector:** FID, 300°C  
Nitrogen makeup gas at 35 mL/min

1. Dimethylamphetamine
2. Amphetamine
3. Derivatization impurity
4. Phentermine
5. Ephedrine
6. Methamphetamine
7. 3,4-Methylenedioxyamphetamine (MDA)
8. 4-Methyl-2,5-dimethoxyamphetamine (STP)
9. 3,4-Methylenedioxymethylamphetamine (MDMA; Ecstasy)
10. 3,4-Methylenedioxyethylamphetamine (MDE; Eve)
11. Benzphetamine



C122