

## Ethylene Oxide

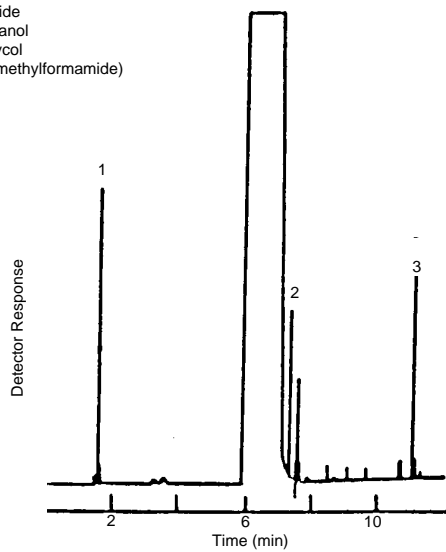
(Courtesy of J. Chromatogr. Sci., 28:97 [1990])

**Column: DB-WAX**  
30 m x 0.25 mm I.D., 0.25  $\mu$ m

**J&W P/N: 122-7032**  
Carrier: Helium at 1 mL/min  
Oven: 60°C for 2 min  
60-180°C at 16°/min

Injector: Split 1:50, 250°C  
Detector: FID, 300°C  
Nitrogen makeup gas at 30 mL/min

1. Ethylene oxide
2. 2-Chloroethanol
3. Ethylene glycol  
(solvent: Dimethylformamide)



C116