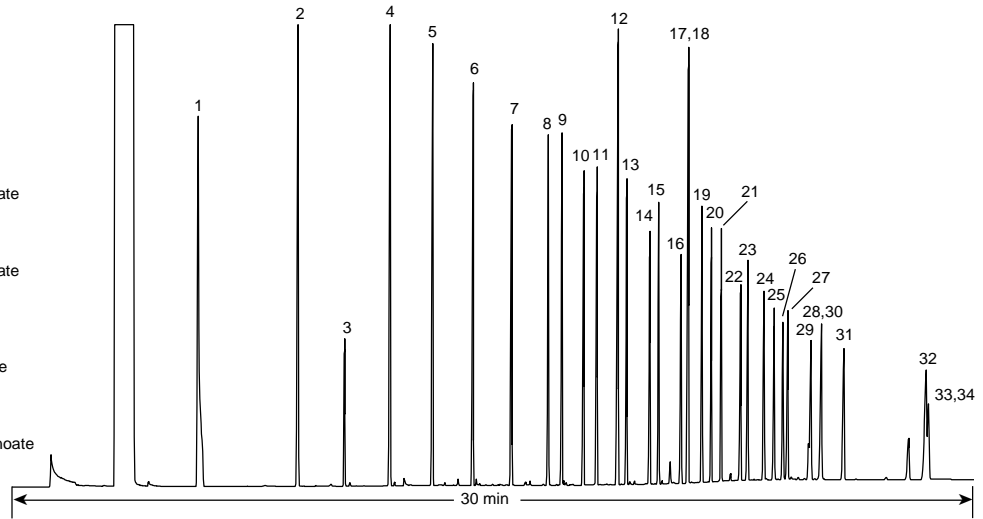


Fatty Acid Methyl Esters (FAME)

Column: DB-WAX
 30 m x 0.25 mm I.D., 0.25 µm
J&W P/N: 122-7032
Carrier: Helium at 40 cm/sec, measured at 50°C
Oven: 50°C for 2 min
 50-250°C at 10°/min
 250°C for 8 min
Injector: Splitless, 250°C
 45 sec purge activation time
Detector: FID, 300°C
 Nitrogen make-up gas at 30 mL/min

25. C20:3 Methyl methyl homogamma linolenate
 26. C20:4 Methyl arachidonate
 27. C20:3 Methyl 11,14,17-eicosatrienoate
 28. C22:0 Methyl behenate
 29. C20:5n3 all *cis*-Methyl 5,8,11,14,17-eicosapentenoate; (EPA)
 30. C22:1 Methyl erucate
 31. C22:2 Methyl 13,16-docosadienoate
 32. C24:0 Methyl lignocerate
 33. C22:6n3 all *cis*-Methyl 4,7,10,13,16,19-docosahexenoate; (DHA)
 34. C24:1 Methyl nervonate

1. C6:0 Methyl hexanoate
 2. C8:0 Methyl octanoate
 3. C9:0 Methyl nonanoate
 4. C10:0 Methyl decanoate
 5. C11:0 Methylundecanoate
 6. C12:0 Methyl laurate
 7. C13:0 Methyl tridecanoate
 8. C14:0 Methyl myristate
 9. C14:1 Methyl myristoleate
 10. C15:0 Methyl pentadecanoate
 11. C15:1 Methyl 10-pentadecenoate
 12. C16:0 Methyl palmitate
 13. C16:1 Methyl palmitoleate
 14. C17:0 Methyl heptadecanoate
 15. C17:1 Methyl 10-heptadecenoate
 16. C18:0 Methyl stearate
 17. C18:1 *trans*-Methyl elaidate
 18. C18:1 *cis*-Methyl oleate
 19. C18:2 Methyl linoleate
 20. C18:3 Methyl gamma linolenate
 21. C18:3 Methyl linolenate
 22. C20:0 Methyl arachidate
 23. C20:1 Methyl 11-eicosanoate
 24. C20:2 Methyl 11,14-eicosadienoate



made by Ester Elf and her sister Ethyl Elf
 C069