

Soil Gases (EPA Method TO-1)

Tenax Cartridge
GC/MSD Total Ion Chromatogram

Column: DB-624
30 m x 0.53 mm I.D., 3.0 μ m

J&W P/N: 125-1334

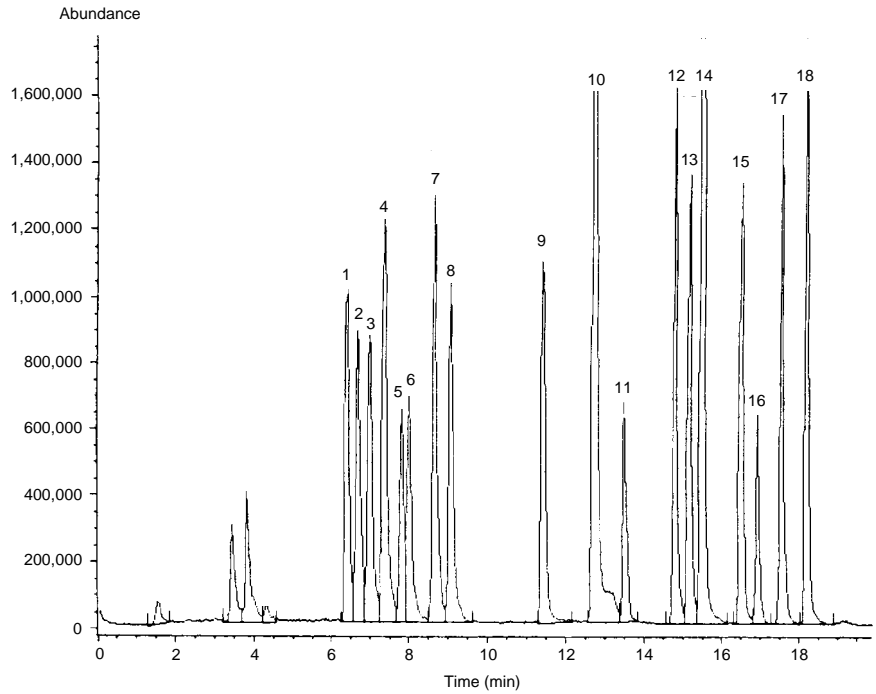
Carrier: Helium at 7 mL/min

Oven: 35°C for 3 min

35-150°C at 5°/min

Detector: GC/MS with Jet
Separator Interface
Helium makeup gas at
30 mL/min

1. Chloroform
2. 1,1,1-Trichloroethane
3. Carbon tetrachloride
4. Benzene
5. 1-Heptene
6. Heptane
7. Trichloroethene
8. 1,2-Dichloropropane
9. Toluene
10. Tetrachloroethene
11. Ethylene dibromide
12. Chlorobenzene
13. Ethylbenzene
14. *m,p*-Xylene
15. *o*-Xylene
16. Bromoform
17. Isopropylbenzene
18. Bromobenzene



C047