

Indoor Air (EPA Method TO-1)

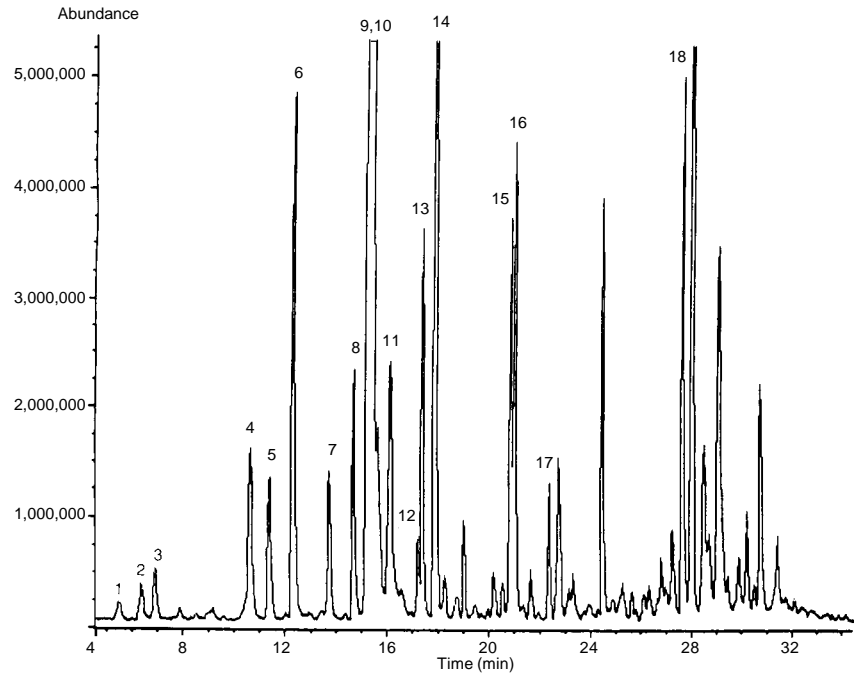
Tenax™ Cartridge
GC/MSD Total Ion Chromatogram

Column: DB-624
30 m x 0.53 mm I.D., 3.0 μm

J&W P/N: 125-1334
Carrier: Helium at 7 mL/min
Oven: 10°C for 5 min
10-180°C at 5°/min
180°C for 10 min

Detector: GC/MS with Jet Separator
Interface
Helium makeup gas at 30 mL/min

1. 2-Methylbutane
2. Trichlorofluoromethane
3. Pentane
4. 2-Methylpentane
5. 3-Methylpentane
6. Hexane/l.c.
7. Methylcyclopentane
8. Bromochloromethane (IS)
9. 1,1,1-Trichloroethane
10. Carbon tetrachloride
11. Benzene
12. Heptane
13. 1,4-Difluorobenzene (IS)
14. Trichloroethene
15. Toluene-d8
16. Toluene
17. Tetrachloroethene
18. 4-Bromofluorobenzene (surrogate)



C045