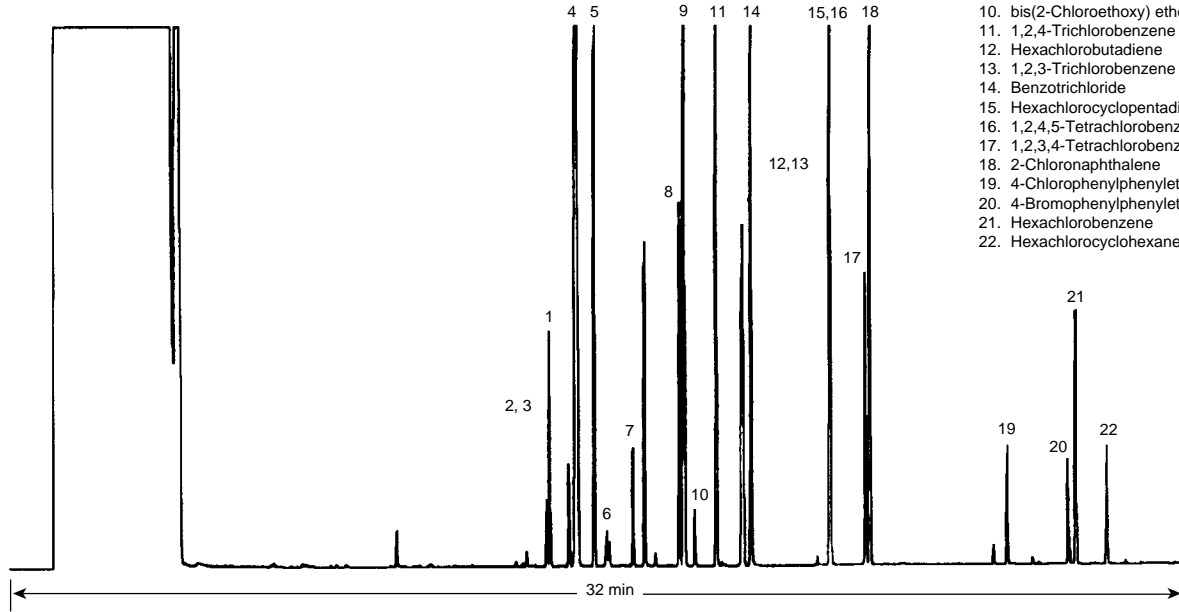


Aromatics, Chlorinated and Halocarbons, Haloethers

Column: DB-5.625
30 m x 0.25 mm I.D., 0.5 µm
J&W P/N: 122-5632
Carrier: Helium at 35 cm/sec, measured at 35°C
Oven: 35°C for 5 min
35-250°C at 8°/min

Injector: Splitless, 250°C
45 sec purge activation time
1 µL of 0.1 µg/µL each in methanol
Detector: FID, 300°C
Nitrogen makeup gas at 30 mL/min

1. bis(2-Chloroethyl) ether
2. Benzyl chloride
3. 1,3-Dichlorobenzene
4. 1,4-Dichlorobenzene
5. 1,2-Dichlorobenzene
6. bis(2-Chloroisopropyl) ether
7. Hexachloroethane
8. 1,3,5-Trichlorobenzene
9. Benzal chloride
10. bis(2-Chloroethoxy) ether
11. 1,2,4-Trichlorobenzene
12. Hexachlorobutadiene
13. 1,2,3-Trichlorobenzene
14. Benzotrichloride
15. Hexachlorocyclopentadiene
16. 1,2,4,5-Tetrachlorobenzene
17. 1,2,3,4-Tetrachlorobenzene
18. 2-Chloronaphthalene
19. 4-Chlorophenylphenylether
20. 4-Bromophenylphenylether
21. Hexachlorobenzene
22. Hexachlorocyclohexane



C027