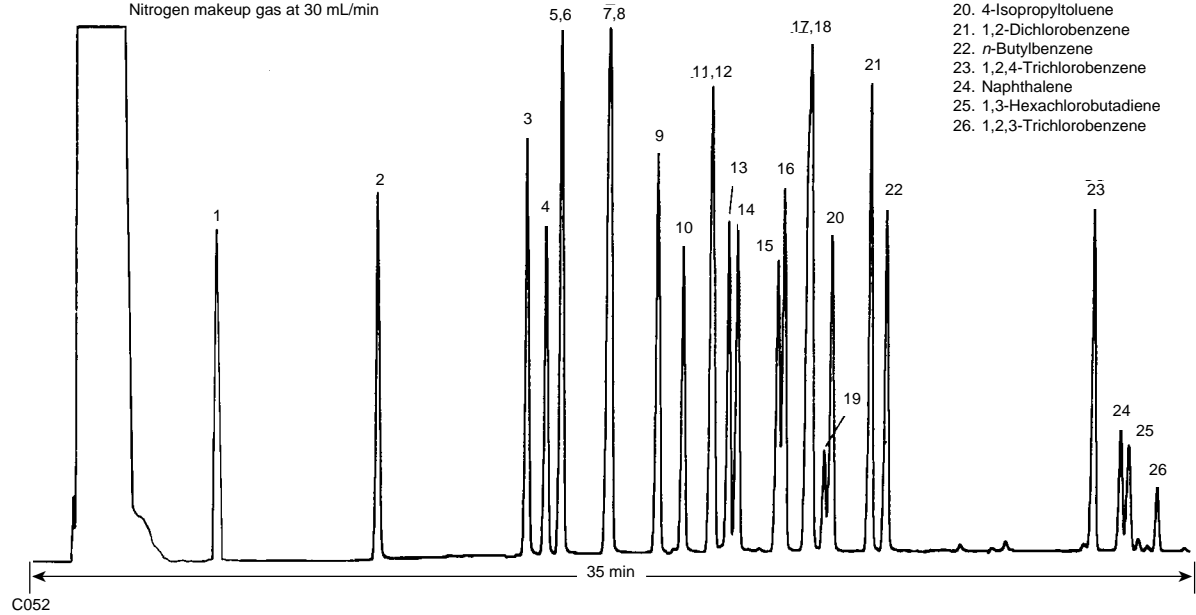


Purgeable Aromatics (EPA Method 503.1)

Column: DB-624
30 m x 0.53 mm I.D., 3.0 µm
J&W P/N: 125-1334
Carrier: Helium at 8 mL/min
Oven: 40°C for 5 min
40-135°C at 3°/min
Injector: Purge and trap
Trap desorption at 8 mL/min
Detector: FID, 250°C
Nitrogen makeup gas at 30 mL/min

- | | |
|---------------------|-------------------------------|
| 1. Benzene | 10. Bromobenzene |
| 2. Toluene | 11. <i>n</i> -Propylbenzene |
| 3. Chlorobenzene | 12. 2-Chlorotoluene |
| 4. Ethylbenzene | 13. 4-Chlorotoluene |
| 5. <i>m</i> -Xylene | 14. 1,3,5-Trimethylbenzene |
| 6. <i>p</i> -Xylene | 15. <i>tert</i> -Butylbenzene |
| 7. <i>o</i> -Xylene | 16. 1,2,4-Trimethylbenzene |
| 8. Styrene | 17. 1,3-Dichlorobenzene |
| 9. Isopropylbenzene | 18. <i>sec</i> -Butylbenzene |
| | 19. 1,4-Dichlorobenzene |
| | 20. 4-Isopropyltoluene |
| | 21. 1,2-Dichlorobenzene |
| | 22. <i>n</i> -Butylbenzene |
| | 23. 1,2,4-Trichlorobenzene |
| | 24. Naphthalene |
| | 25. 1,3-Hexachlorobutadiene |
| | 26. 1,2,3-Trichlorobenzene |



C052