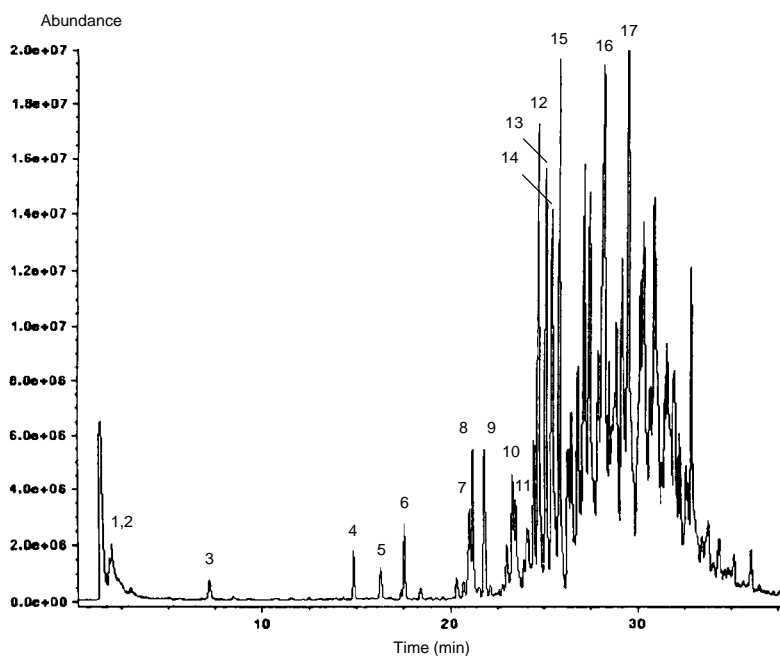


"Summa" Canister Method TO-14 Soil Gas Sample

Column: DB-624
30 m x 0.53 mm I.D., 3.0 µm
J&W P/N: 125-1334
Carrier: Helium at 7 mL/min
Oven: 10°C for 5 min
10-180°C at 5°/min
180°C for 10 min
Detector: MSD with Jet
Separator Interface
Helium makeup gas at 30 mL/min
(150 mL sample) GC/MS Full Scan

1. Freon™-12
2. Freon-22
3. 1,1-Dimethylcyclopropane
4. Bromochloromethane (IS)
5. 1,2-Dichloroethane-d4 (surrogate)
6. 1,4-Difluorobenzene (IS)
7. Toluene-d8 (surrogate)
8. Toluene
9. Octane
10. Ethylcyclohexane
11. 1,1,3-Trimethylcyclohexane
12. Chlorobenzene
13. Ethylbenzene
14. *m,p*-Xylene
15. Nonane
16. 3,5-Dimethyloctane
17. Decane



C048

made by elves in the "good old summa-time"