

## Herbicides

**Column:** DB-210  
30 m x 0.25 mm I.D., 0.25  $\mu$ m

**J&W P/N:** 122-0232

**Carrier:** Helium at 35 cm/sec

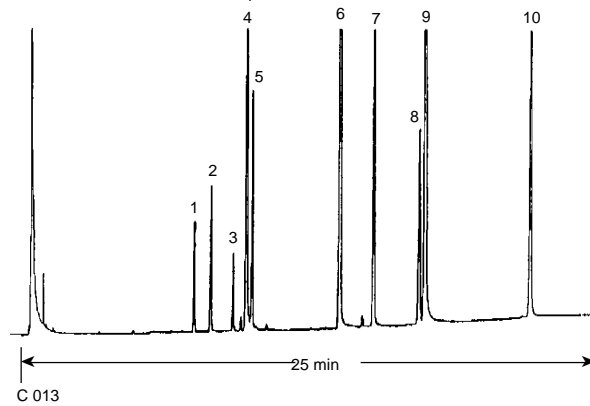
**Oven:** 140-215°C at 3°/min

**Injector:** Split 1:50, 1  $\mu$ L

**Detector:** ECD, 300°C

Nitrogen makeup gas at 30 mL/min

1. Phorate
2. Ethoprop
3. Terbufos
4. Atrazine
5. Fonofos
6. Propachlor
7. Chlorpyrifos
8. Alachlor
9. Metolachlor
10. Cyanazine



C 013