

Chlorinated Pesticides

Column: DB-1701

30 m x 0.32 mm I.D., 0.25 µm

J&W P/N: 123-0732

Carrier: Helium at 35 cm/sec, measured at 50°C

Oven: 50°C for 1 min

50-150°C at 25°/min

150-275°C at 5°/min

Injector: Splitless, 250°C

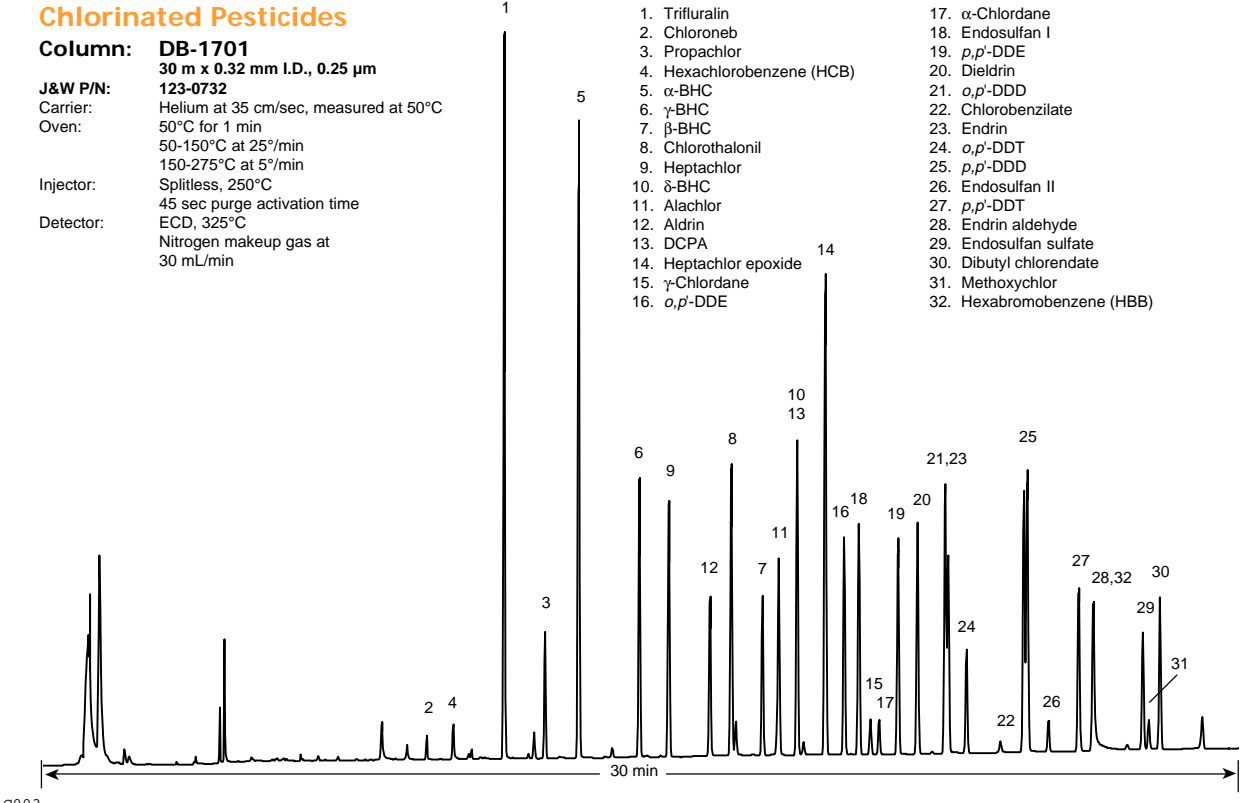
45 sec purge activation time

Detector: ECD, 325°C

Nitrogen makeup gas at

30 mL/min

- | | |
|----------------------------|----------------------------|
| 1. Trifluralin | 17. α-Chlordane |
| 2. Chloroneb | 18. Endosulfan I |
| 3. Propachlor | 19. p,p'-DDE |
| 4. Hexachlorobenzene (HCB) | 20. Dieldrin |
| 5. α-BHC | 21. o,p'-DDD |
| 6. γ-BHC | 22. Chlorobenzilate |
| 7. β-BHC | 23. Endrin |
| 8. Chlorothalonil | 24. o,p'-DDT |
| 9. Heptachlor | 25. p,p'-DDD |
| 10. δ-BHC | 26. Endosulfan II |
| 11. Alachlor | 27. p,p'-DDT |
| 12. Aldrin | 28. Endrin aldehyde |
| 13. DCPA | 29. Endosulfan sulfate |
| 14. Heptachlor epoxide | 30. Dibutyl chlorendate |
| 15. γ-Chlordane | 31. Methoxychlor |
| 16. o,p'-DDE | 32. Hexabromobenzene (HBB) |



C003