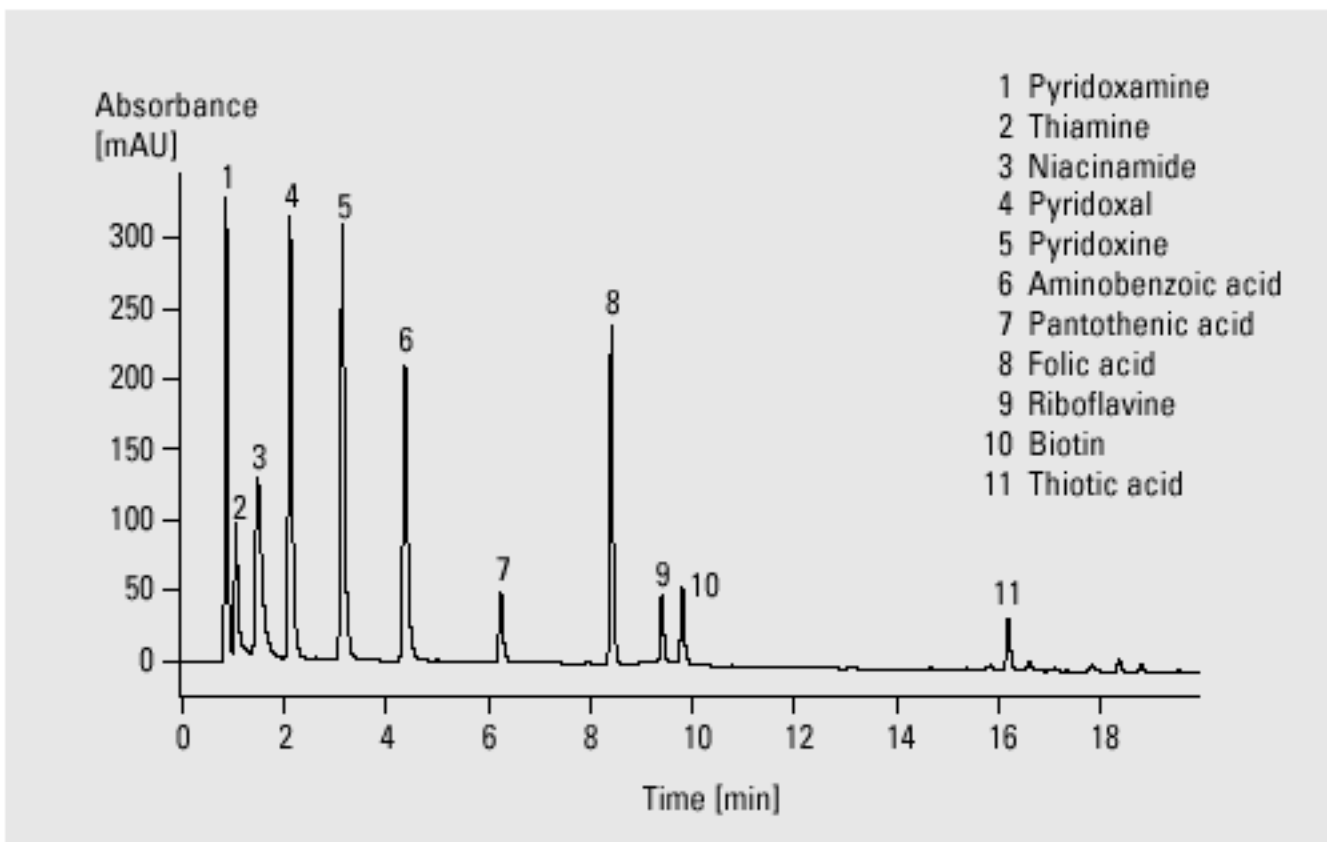
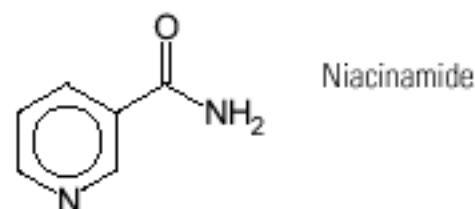
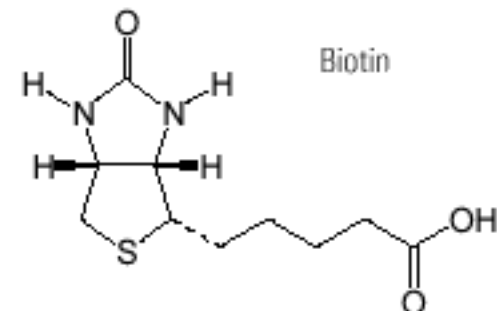
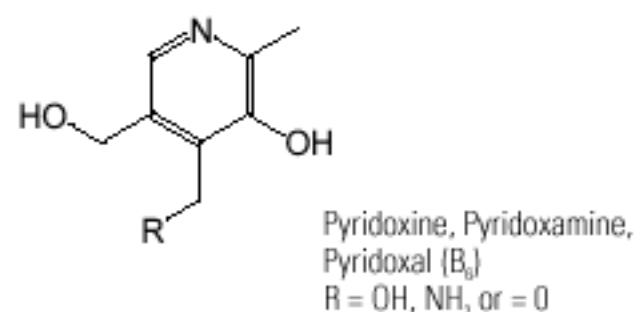
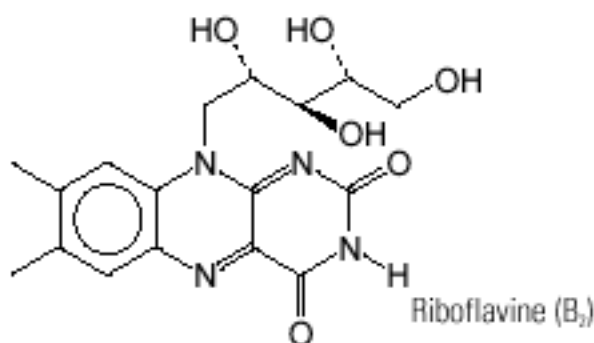
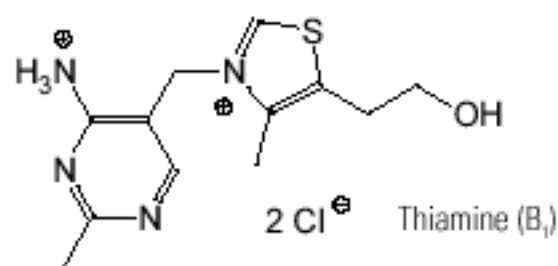
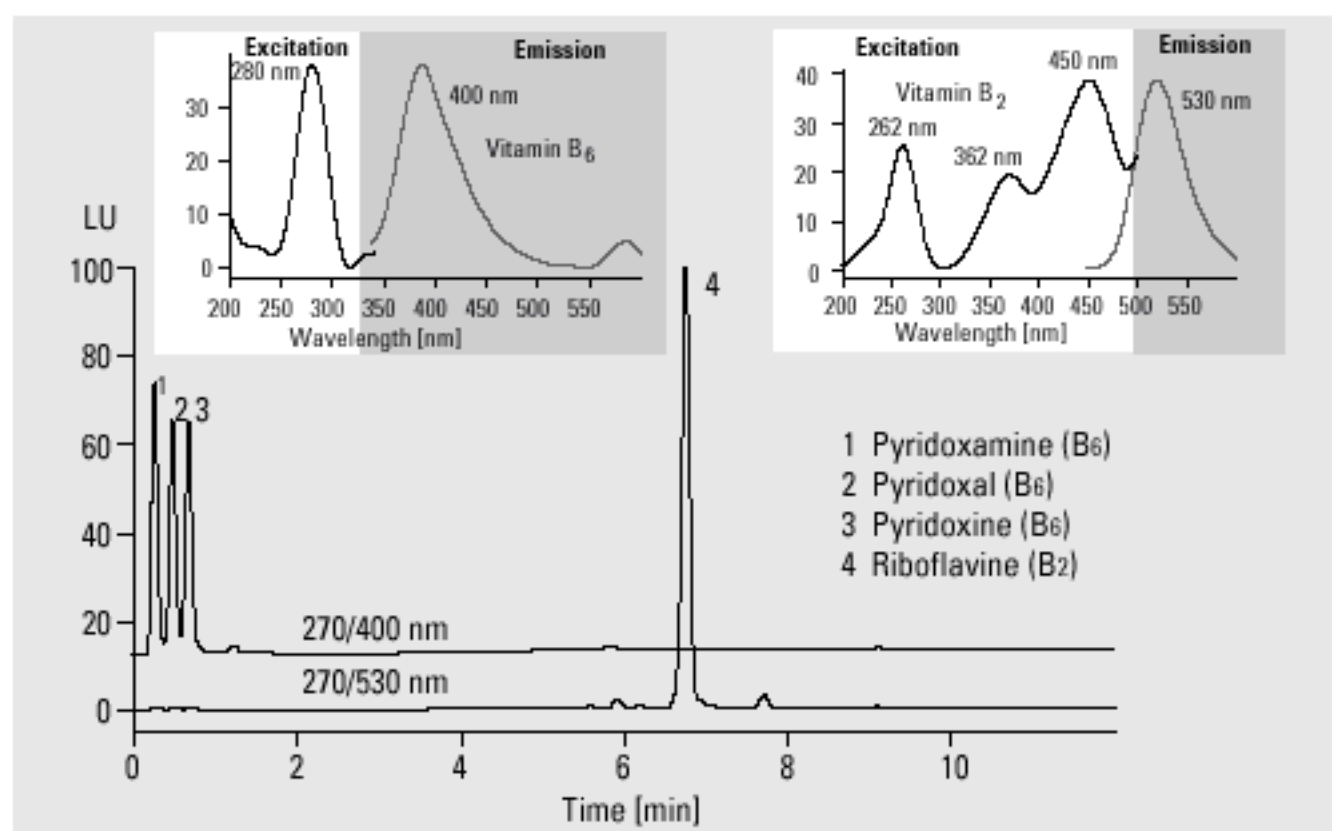


# Water-Soluble Vitamins



## Analysis of water-soluble vitamins

<b>Column</b>	4.6 x 75 mm Zorbax SB-C18, 3.5 $\mu$ m
<b>Mobile phase</b>	A = 0.05M KH <sub>2</sub> PO <sub>4</sub> in water (pH = 2.5), B = acetonitrile
<b>Flow rate</b>	1.0 ml/min
<b>Gradient</b>	at 0 min 0.6 % B, at 0.5 min 0.6 % B, at 4 min 6 % B at 12 min 30 % B, at 17 min 60 % B
<b>Column wash</b>	at 19 min 60 % B at 20 min 0.6 % B
<b>UV detector</b>	variable wavelength detector 204 nm, standard cell
<b>Column compartment temperature</b>	15 °C
<b>Stop time</b>	20 min
<b>Post time</b>	10 min
<b>Injection volume</b>	5 $\mu$ l



Analysis of vitamins B<sub>2</sub> and B<sub>6</sub> using the HP 1100 Series fluorescence detector (column: 21 x 50 mm Zorbax SB-C18, 5  $\mu$ m)