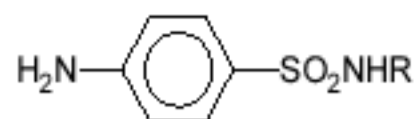


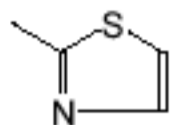
Sulfa Drugs



R = H

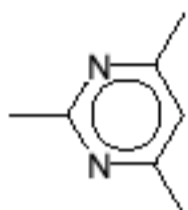
Sulfanilamide

R =



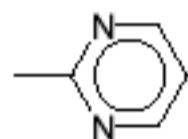
Sulfathiazole

R =



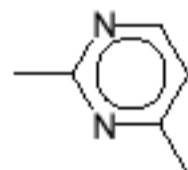
Sulfamethazine

R =

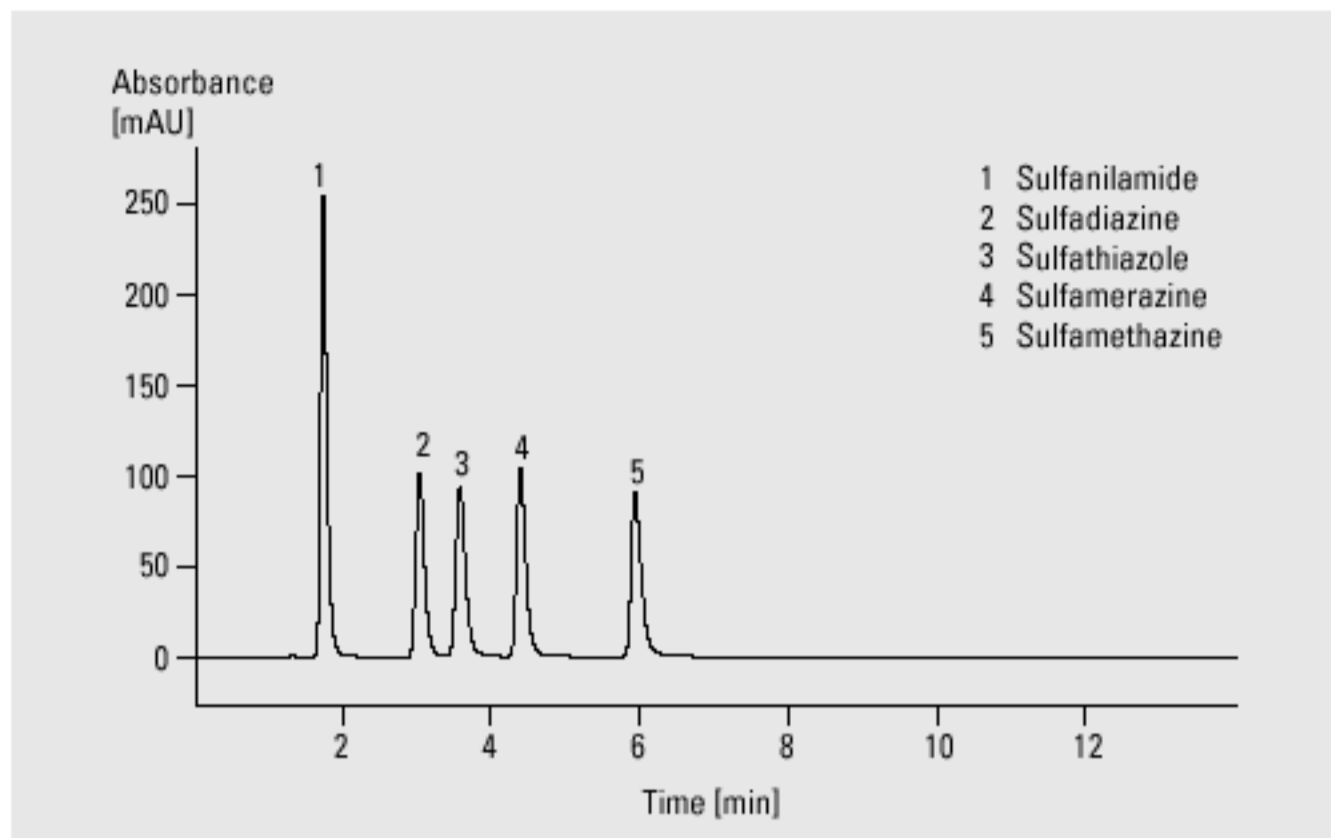


Sulfadiazine

R =

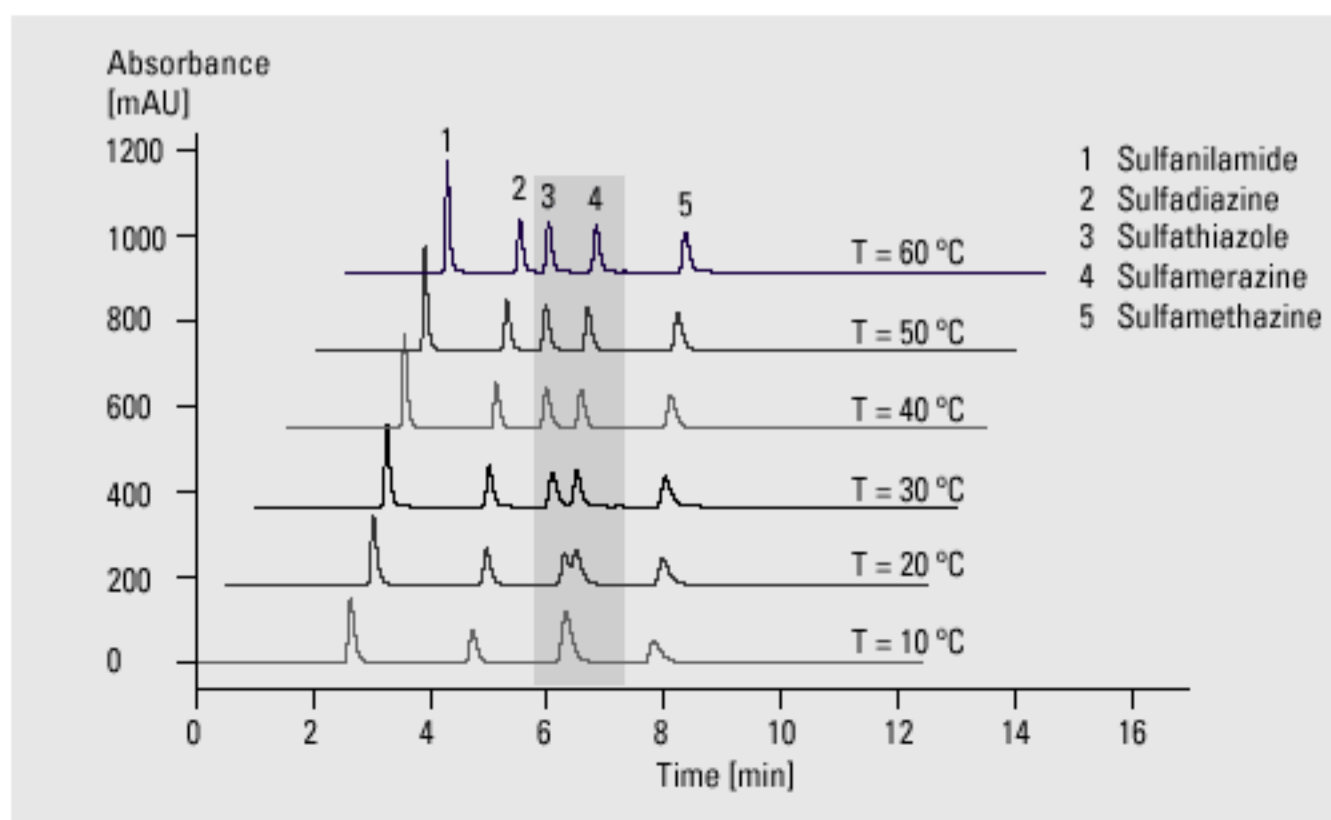


Sulfamerazine



Analysis of sulfa drugs

Column	4 x 125 mm Hypersil ODS, 5 μ m
Mobile phase	A = water, B = acetonitrile
Flow rate	1.0 ml/min
Gradient	at 0 min 10 % B at 10 min 25 % B
Column wash	at 12 min 10 % B
UV detector	variable wavelength detector 254 nm, standard cell
Column compartment temperature	50 $^{\circ}$ C
Stop time	12 min
Post time	5 min
Injection volume	5 μ l



Separation of sulfathiazole (3) and sulfamerazine (4) using different column temperatures