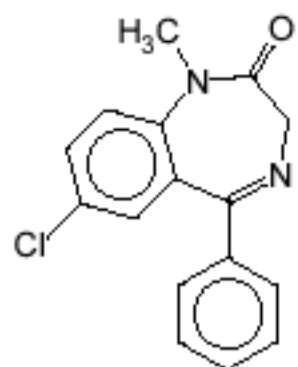
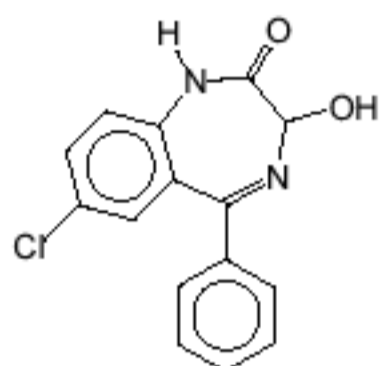


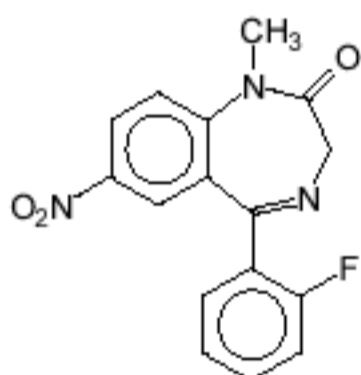
Sedative Drugs



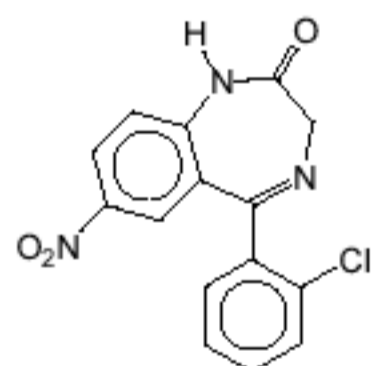
Diazepam



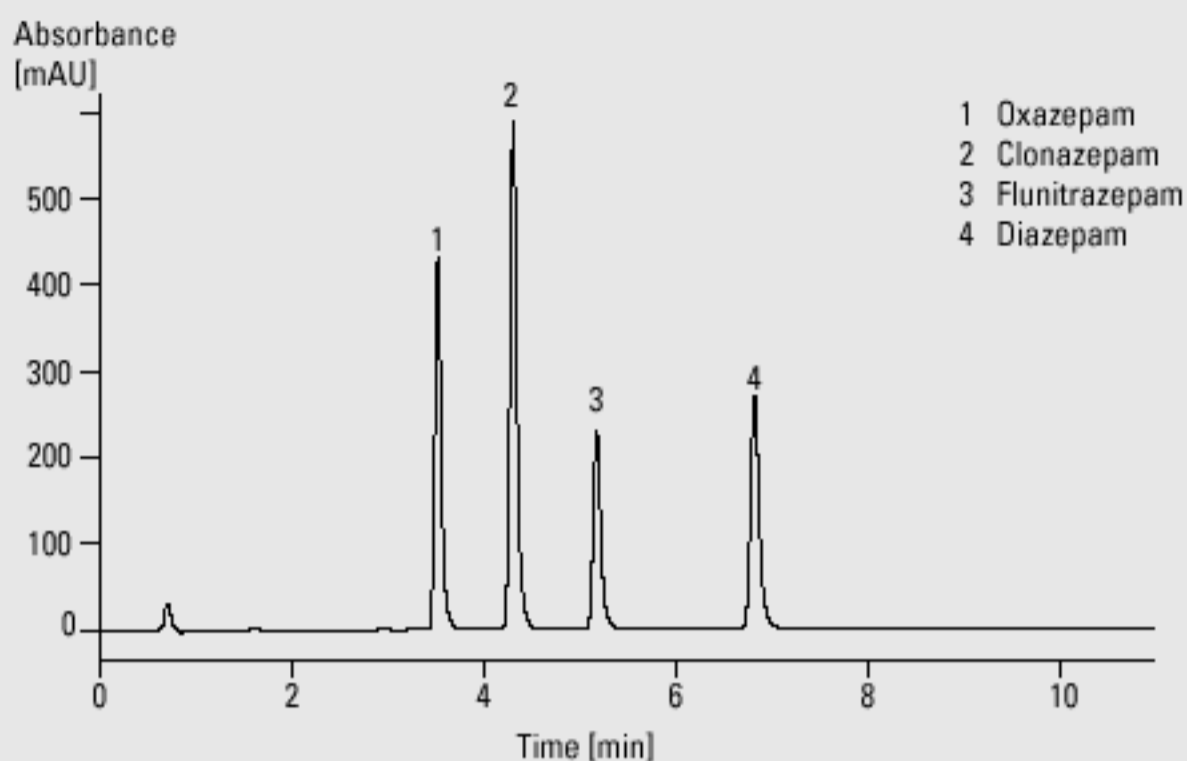
Oxazepam



Flunitrazepam

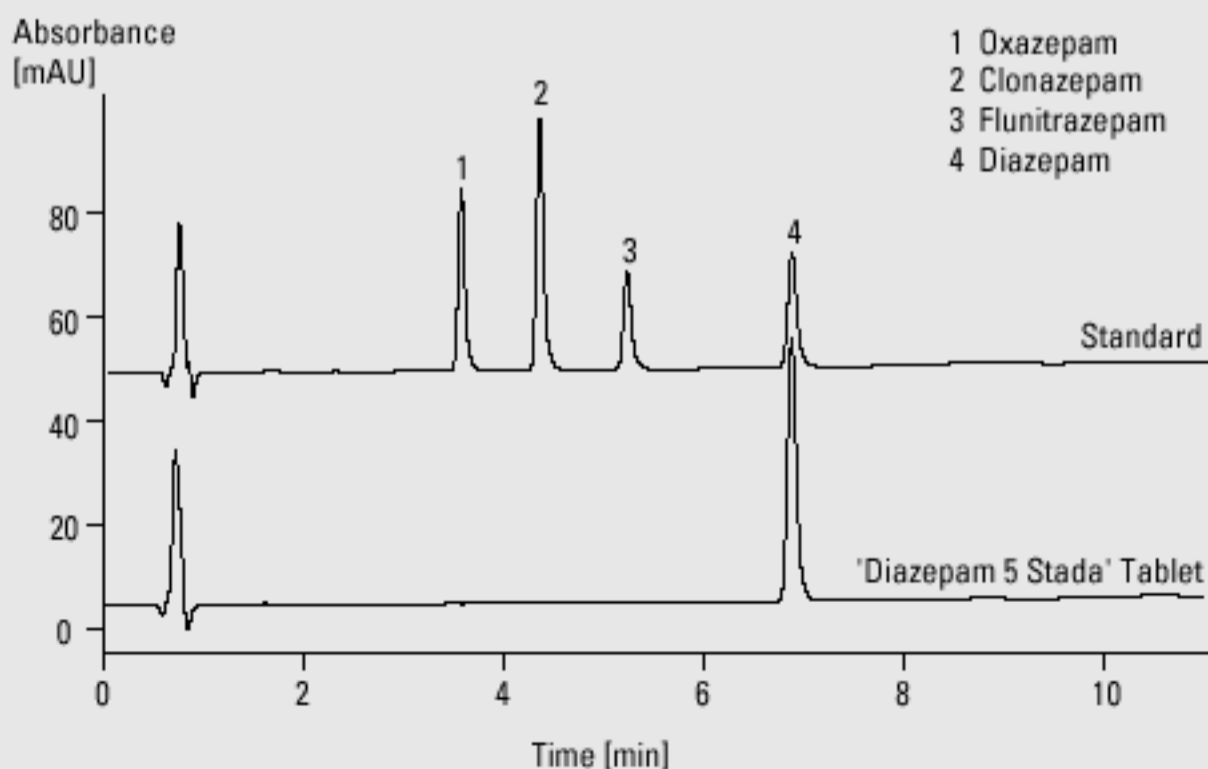


Clonazepam



Analysis of sedative drugs

Column	4.6 x 75 mm Zorbax SB-C18 , 3.5 μ m
Mobile phase	A = 0.025 M KH_2PO_4 in water (pH = 3), B = acetonitrile
Flow rate	1.2 ml/min
Gradient	at 0 min 30 % B at 10 min 55 % B
Column wash	at 11 min 30 % B
UV detector	variable wavelength detector 210 nm, standard cell
Column compartment temperature	25 $^\circ\text{C}$
Stop time	11 min
Post time	5 min
Injection volume	5 μ l



Analysis of diazepam in 'Diazepam 5 Stada' tablet