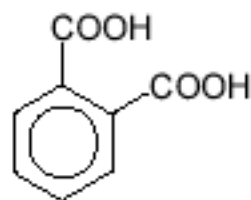
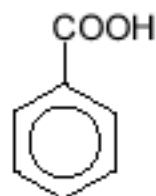


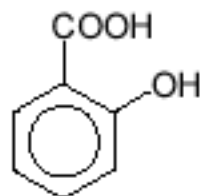
Keratolytic Drugs



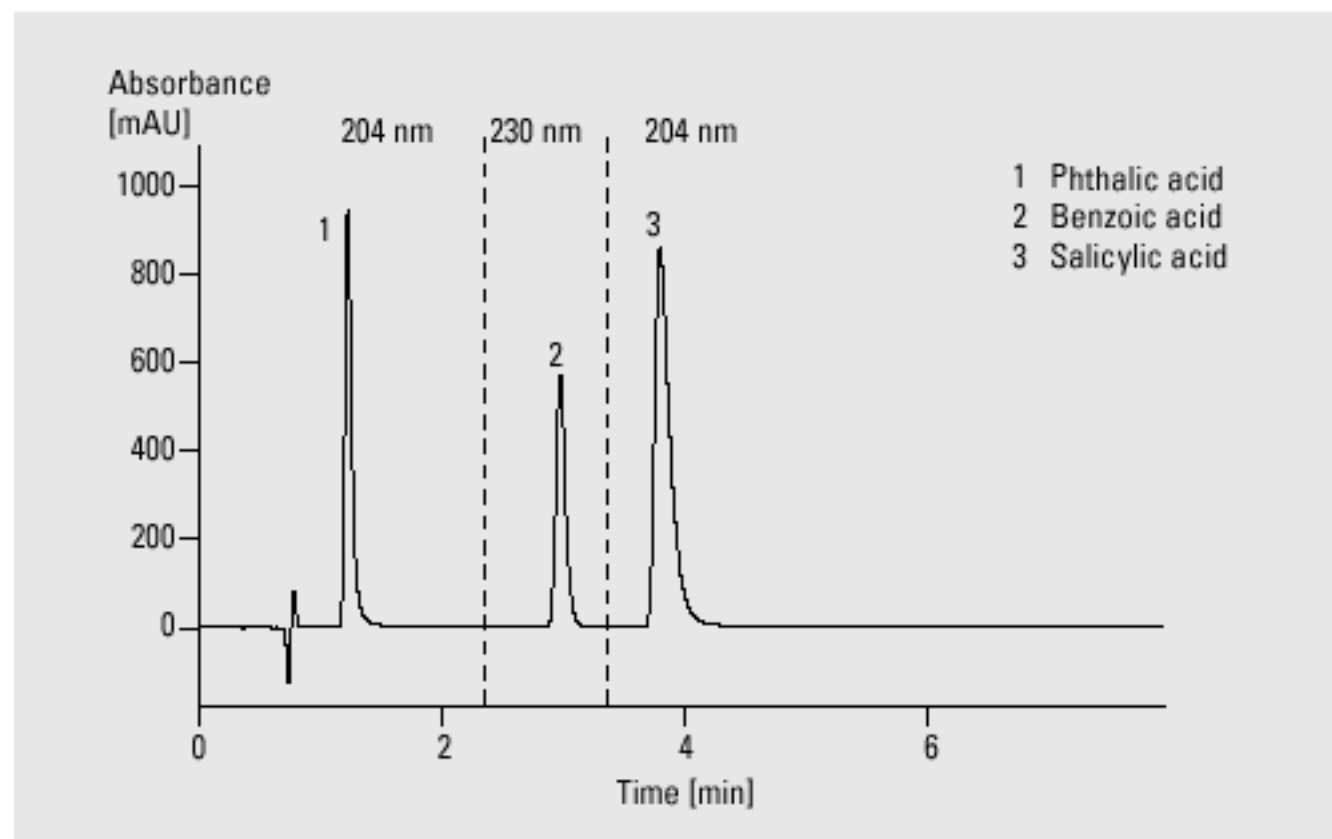
Phthalic acid



Benzoic acid



Salicylic acid



Analysis of keratolytic drugs

Column	4.6 x 75 mm Zorbax SB-C18, 3.5 μ m
Mobile phase	A = 0.05 M NH_4OAc in water (pH = 2.2), B = acetonitrile
Flow rate	1.2 ml/min
Isocratic	at 0 min 20 % B at 10 min 20 % B
UV detector	variable wavelength detector at 0 min 204 nm at 2.2 min 230 nm at 3.2 min 204 nm, standard cell
Column compartment temperature	50 $^\circ\text{C}$
Stop time	10 min
Injection volume	5 μ l