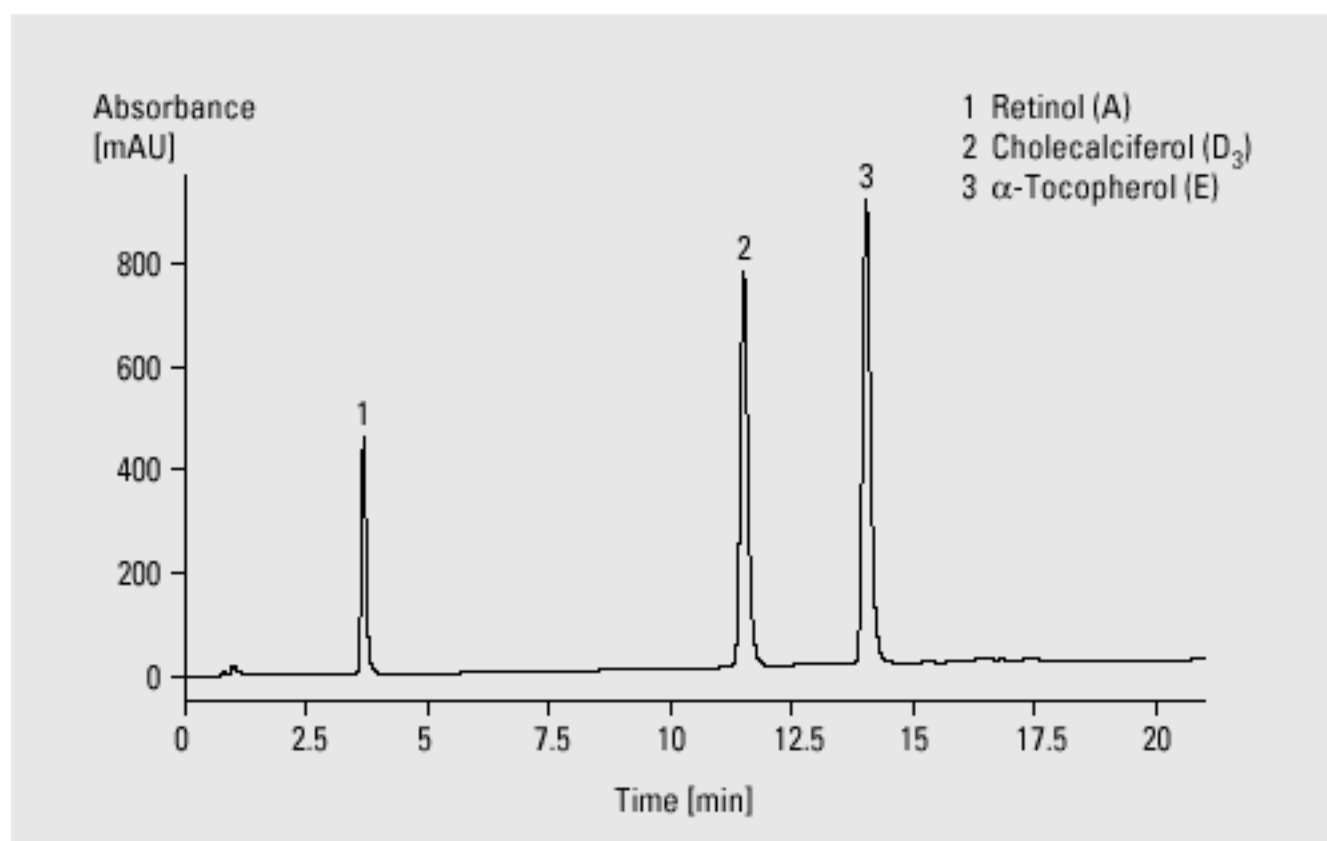
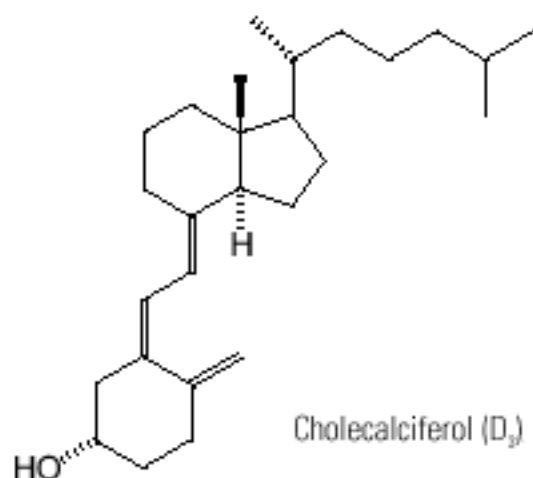
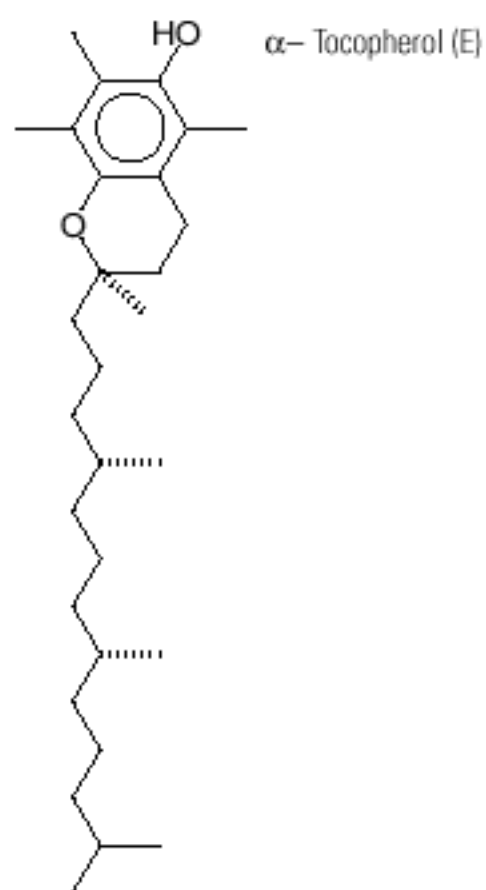
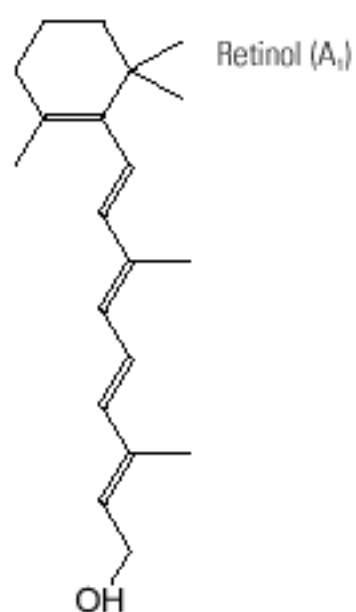


Fat-Soluble Vitamins



Analysis of fat-soluble vitamins

Column	4.6 x 75 mm Zorbax Eclipse XDB-C18, 3.5 μ m
Mobile phase	A = water, B = methanol
Flow rate	1.0 ml/min
Gradient	at 0 min 90 % B at 15 min 100 % B at 20 min 100 % B
Column wash	at 21 min 90 % B
UV detector	variable wavelength detector 210 nm, standard cell
Column compartment temperature	20 °C
Stop time	21 min
Post time	5 min
Injection volume	5 μ l