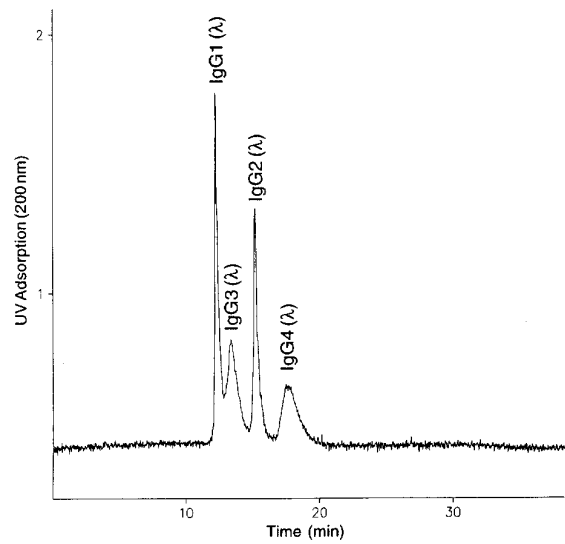


Human IgG Subclasses

Column: μ SIL-FC
50 μ m I.D. x 75 cm (20 cm to detector)
J&W P/N: 291-8111 (MD-Phosphate Kit)
Buffer: 50mM phosphate, pH 4.6
+ 0.01 % of FC-PN (J&W P/N: 590-4301)
Voltage: 375 V/cm
Injector: hydrostatic
Temperature: ambient
Detector: UV, 200 nm
Sample: a mixture of myeloma IgGs (Sigma)



CE041