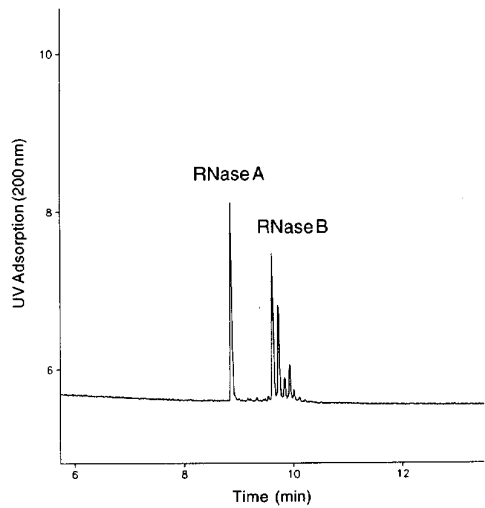


Bovine Ribonuclease

Column: μ SIL-FC
50 μ m I.D. x 70 cm (50 cm to detector)

J&W P/N: 194-8111
Buffer: 0.1M Acetate, pH 4.1
0.005% mixture of
FC-WA (J&W P/N: 590-4305) : FC-N (J&W P/N: 590-4304) = 2:1

Voltage: +25 kV
Injector: hydrostatic
Temperature: ambient
Detector: UV, 200 nm
Sample: RNase A and RNase B



CE040