

CE Separation of Bovine Thrombin in Reversed EOF

Column: μ SIL-FC
50 μ m I.D. x 75 cm (50 cm to detector)

J&W P/N: 194-8111

Buffer: 20 mM phosphate, pH 7.2
0.01% mixture of FC-Cation (J&W P/N: 590-4302) :
FC-N (J&W P/N: 590-4304) = 1:1

Voltage: - 15 kV

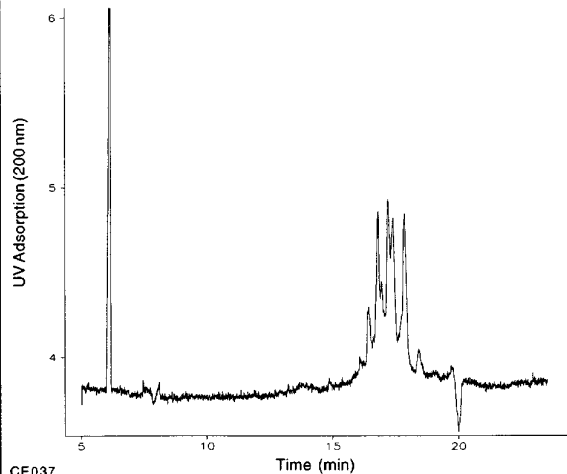
Injector: hydrostatic

Temperature: ambient

Detector: UV, 200 nm

Sample: Bovine thrombin (Sigma)

Note: reverse EOF mode



CE037