

## Metallothioneins (MTs) —

### Glycoform Pattern

**Column:**  $\mu$ SIL-FC  
**50  $\mu$ m I.D. x 75 cm (50 cm to detector)**

**J&W P/N:** 291-8111 (MD-Phosphate Kit)

**Buffer:** 20 mM phosphate, pH 7.2

0.005% of FC-Cation (J&W P/N: 590-4302)

**Voltage:** -25 kV

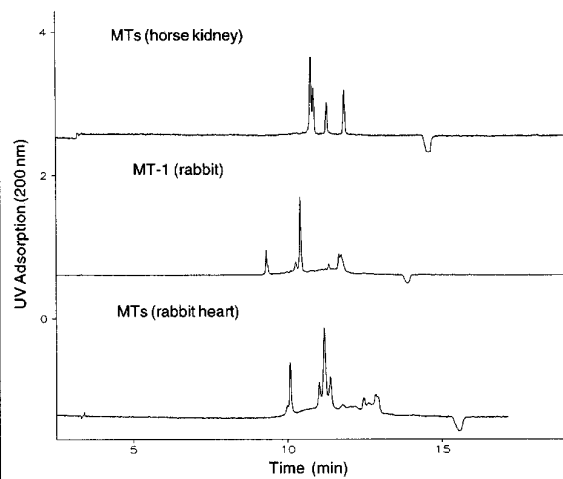
**Injector:** hydrostatic

**Temperature:** ambient

**Detector:** UV, 200 nm

**Sample:** MTs, sample source as indicated

*Note: reverse EOF mode*



CE035