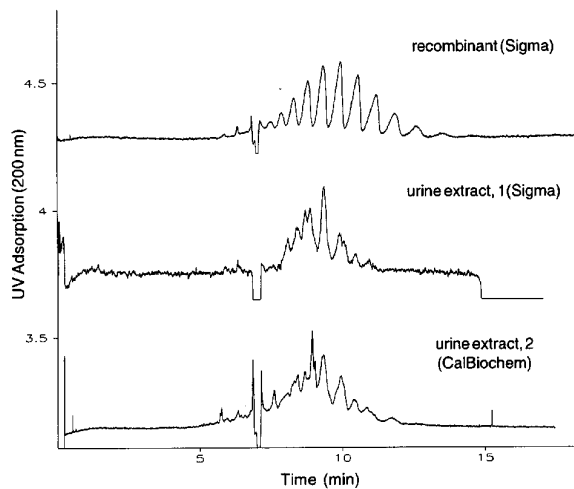


# Human Chorionic Gonadotropin (HCG) — Glycoform Pattern

**Column:**  $\mu$ SIL-FC  
**50  $\mu$ m I.D. x 75 cm (25 cm to detector)**

**J&W P/N:** 194-8111  
**Buffer:** 25 mM sodium acetate/acetic acid, pH 5.5  
0.005% mixture of  
FC-WA (J&W P/N: 590-4305) : FC-N (J&W P/N: 590-4304) = 2:1

**Voltage:** 22.5 kV  
**Injector:** hydrostatic  
**Temperature:** ambient  
**Detector:** UV, 200 nm  
**Sample:** HCG, sample source as indicated



CE034