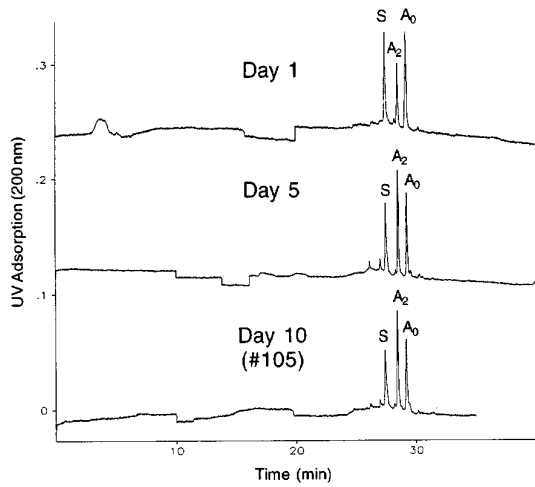


## CE Separation of Human Hemoglobin (Hb) Variants — Reproducibility

**Column:**  $\mu$ SIL-FC  
**50  $\mu$ m I.D. x 100 cm (75 cm to detector)**  
**J&W P/N:** 293-8111 (MD-Acetate Kit)  
**Buffer:** 40 mM sodium acetate/acetic acid, pH 4.9  
0.02% of FC-PN (J&W P/N: 590-4301)  
**Voltage:** 28 kV  
**Injector:** hydrostatic  
**Temperature:** ambient  
**Detector:** UV, 200 nm  
**Sample:** A mixture of purified Hb A<sub>0</sub>, Hb S and Hb A<sub>2</sub>, 0.1 mg/mL (Sigma)



CE030