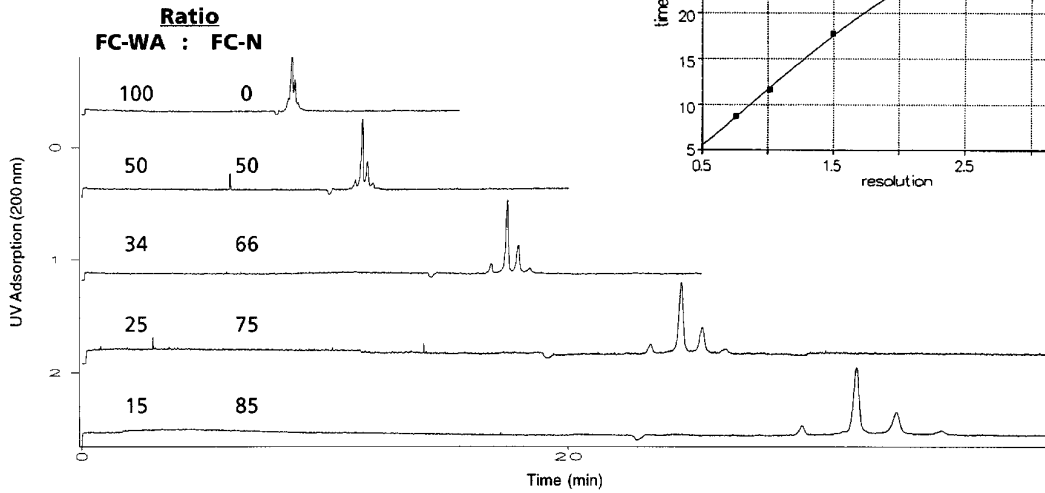
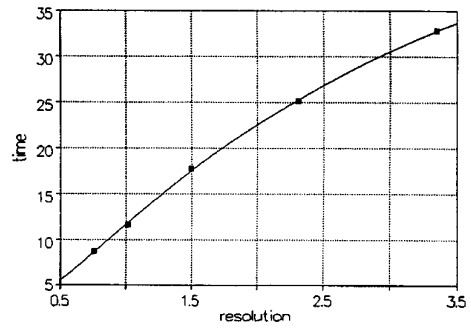


# EOF Optimization (MD-EOF Optimization Kit)

## Resolution of Monoclonal Antibodies at Varying EOF

**Column:**  $\mu$ SIL-FC  
**50  $\mu$ m I.D. x 75 cm (50 cm to detector)**  
**J&W P/N:** 194-8111  
**Buffer:** 10 mM phosphate, pH 7.3  
 + 0.005% mixture of FC-WA (J&W P/N: 590-4305) : FC-N (J&W P/N: 590-4304)  
**Voltage:** +20 kV  
**Injector:** hydrostatic  
**Temperature:** ambient  
**Detector:** UV, 200 nm  
**Sample:** mouse IgG1 (clone HP6111 from CalBiochem)

**Time vs. Resolution**



CE028