

Myoglobin Tryptic Peptides

Column: μ SIL-WAX
50 μ m I.D. x 60 cm (50 cm to detector)

J&W P/N: 196-7203

Buffer: 50 mM heptanesulfonic acid/4 mM phosphoric acid, pH 2.5

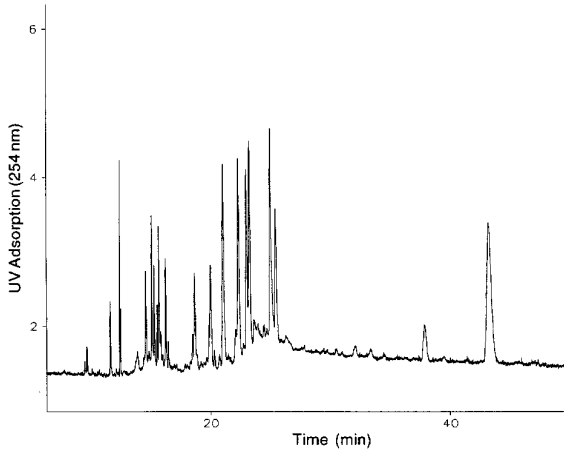
Voltage: 15 kV

Injector: hydrostatic

Temperature: ambient

Detector: UV, 200 nm

Sample: 0.2 mg/mL myoglobin (tryptic digest)



CE026