

20-bp DNA Standards Ladder

Column: **μSIL-DB-17**
50 μm I.D. x 27 cm (20 cm to detector)

J&W P/N: 196-1703
Buffer: DNA replaceable gel buffer
(Sigma) fortified with 1 mM YO-PRO-1 dye

Voltage: -5 kV

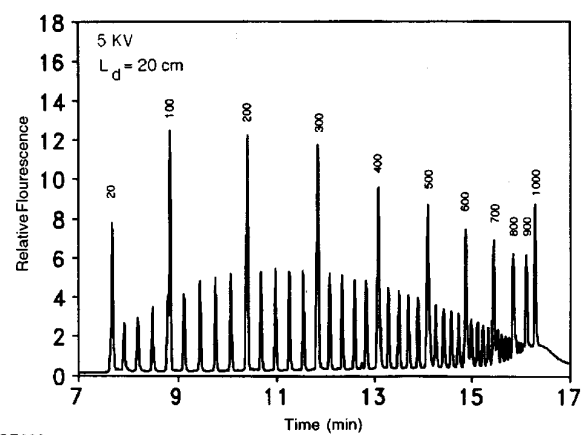
Injector: electrokinetic, -1kV for 4 sec

Temperature: 23°C

Detector: LIF, 488 nm argon ion laser

Sample: 20-bp DNA standards ladder

(Figures courtesy of Dr. King C. Chan et al., Chemical Synthesis and Analysis Laboratory, SAIC Fredrick, National Cancer Institute, Fredrick, MD.)



CE023