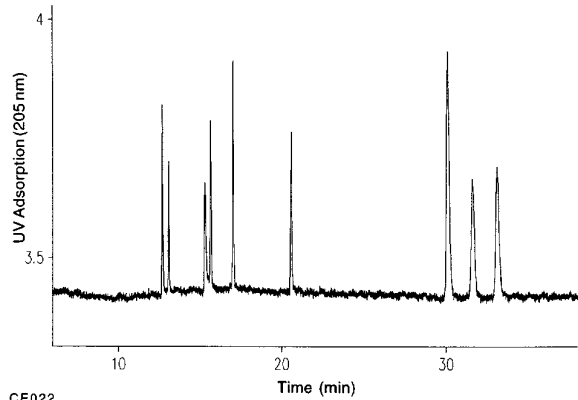


## Peptide Standards

Column: **μSIL-WAX**  
**50 μm I.D. x 75 cm (50 cm to detector)**

J&W P/N: 196-7203  
Buffer: 10 mM sodium phosphate, pH 2.85  
Voltage: 20 kV, 3 μA  
Injector: hydrostatic  
Temperature: ambient  
Detector: UV, 205 nm  
Sample: Peptide standards (obtained from Sigma, product # P2693)

Bradykinin  
Bradykinin fragment 1-5  
Substance P  
[Arg<sup>8</sup>]-Vasopressin  
Luteinizing hormone releasing hormone  
Brombesin  
Leucine-enkephalin  
Methionine enkephalin  
Oxytocin



CE022