

# Topoisomers of pBR 322 DNA

**Column:**  $\mu$ SIL-FC  
50  $\mu$ m I.D. x 60 cm (20 cm to detector)

**J&W P/N:** 194-8111

**Buffer:** 0.1% HPMC / 1x TBE, pH 8.3

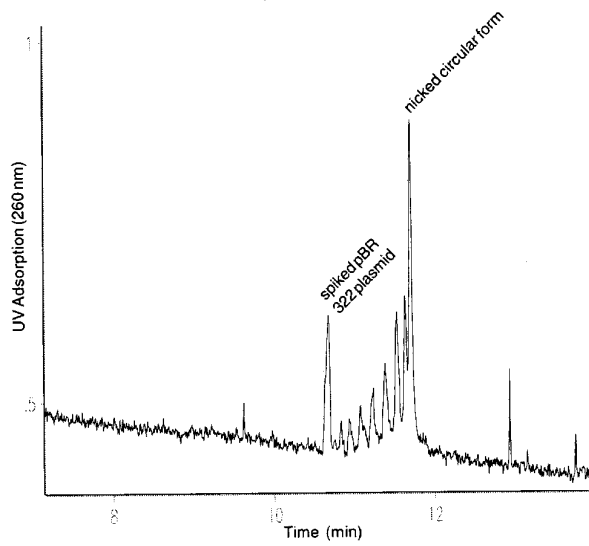
**Voltage:** -6 kV

**Injector:** electrokinetic, -7.5 kV for 5 sec

**Temperature:** ambient

**Detector:** UV, 260 nm

**Sample:** An artificial topoisomer ladder of pBR322 DNA  
Membrane dialysis for 30 min at 4°C before injection



CE020