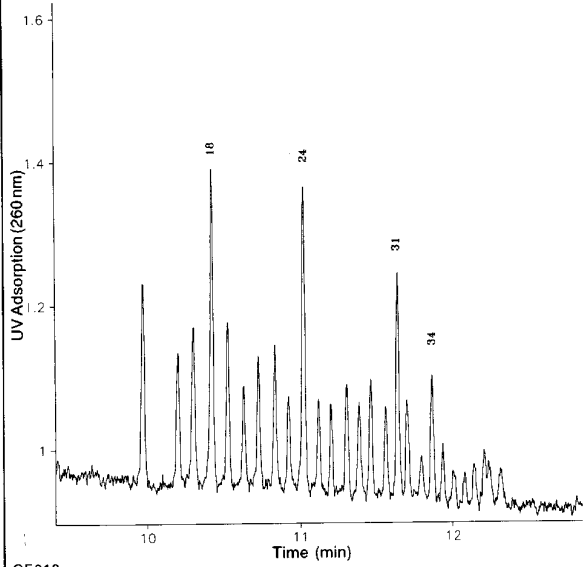


D1S80 Allelic Ladder

Column: μ SIL-DNA
75 μ m I.D. x 65 cm (20 cm to detector)

J&W P/N: 199-2602
Buffer: 0.5% HPMC/1x TBE, 10 μ M ethidium bromide
Voltage: -160 V/cm
Injector: electrokinetic, -5 kV for 3 sec
Temperature: ambient
Detector: UV, 260 nm
Sample: D1S80 allelic ladder (ABD/PE cat. # N808-0064)



CE018