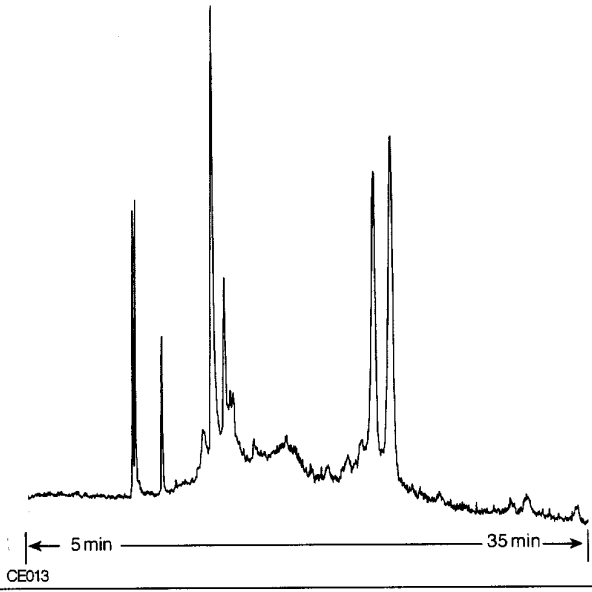


Whole Milk Proteins

Column: **μSIL-WAX**
50 μm I.D. x 100 cm (75 cm to detector)

J&W P/N: 196-7203
Buffer: 10 mM sodium phosphate, pH 2.1
Voltage: 20 kV, 3 μA
Injector: hydrostatic
Temperature: ambient
Detector: UV, 200 nm
Sample: 1 : 100 dilution of supermarket skim milk in d.i. water



CE013