

# Sulfur Compounds in Propylene

Column: GS-GasPro

30 m x 0.32 I.D.

P/N: 113-4332

Oven: 60°C for 2.5 minutes

10°C to 250°C, hold 5 minutes

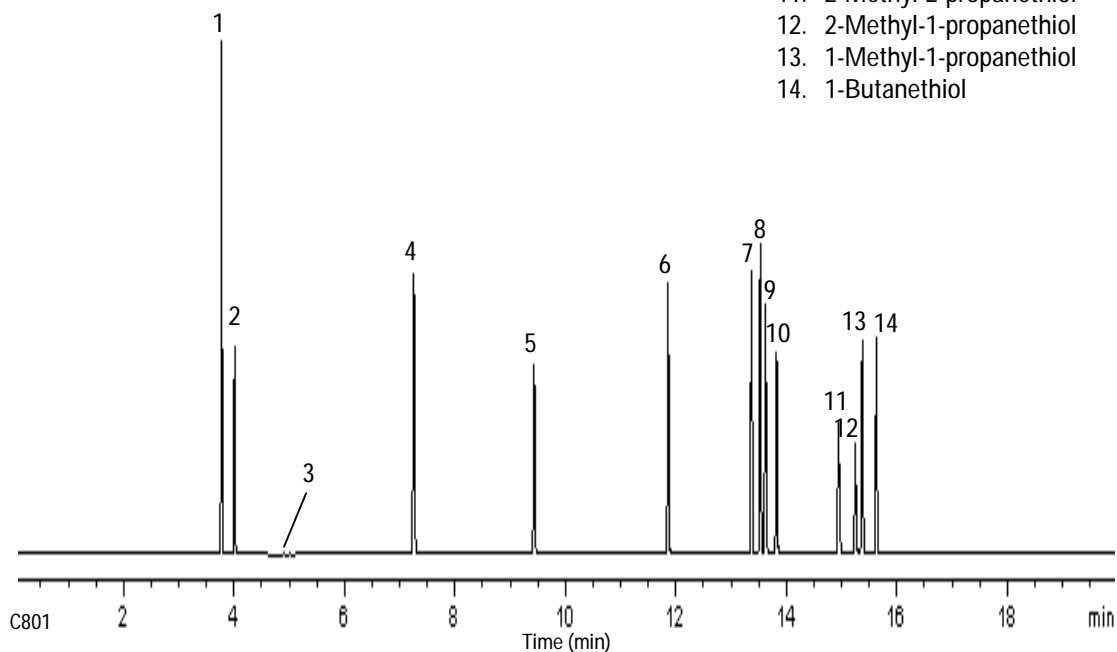
Injector: OI Analytical Volatiles Inlet

5:1 split, 200 µL gas sampling valve

Sample: 1 ppm Sulfur compounds in Propylene

Detector: OI Analytical Model 5380 PFPD

1. COS
2. H<sub>2</sub>S
3. Propylene
4. CS<sub>2</sub>
5. Methyl mercaptan
6. Ethyl mercaptan
7. Thiophene
8. Dimethyl sulfide
9. 2-Propanethiol
10. 1-Propanethiol
11. 2-Methyl-2-propanethiol
12. 2-Methyl-1-propanethiol
13. 1-Methyl-1-propanethiol
14. 1-Butanethiol



Chromatogram courtesy of OI Analytical.

