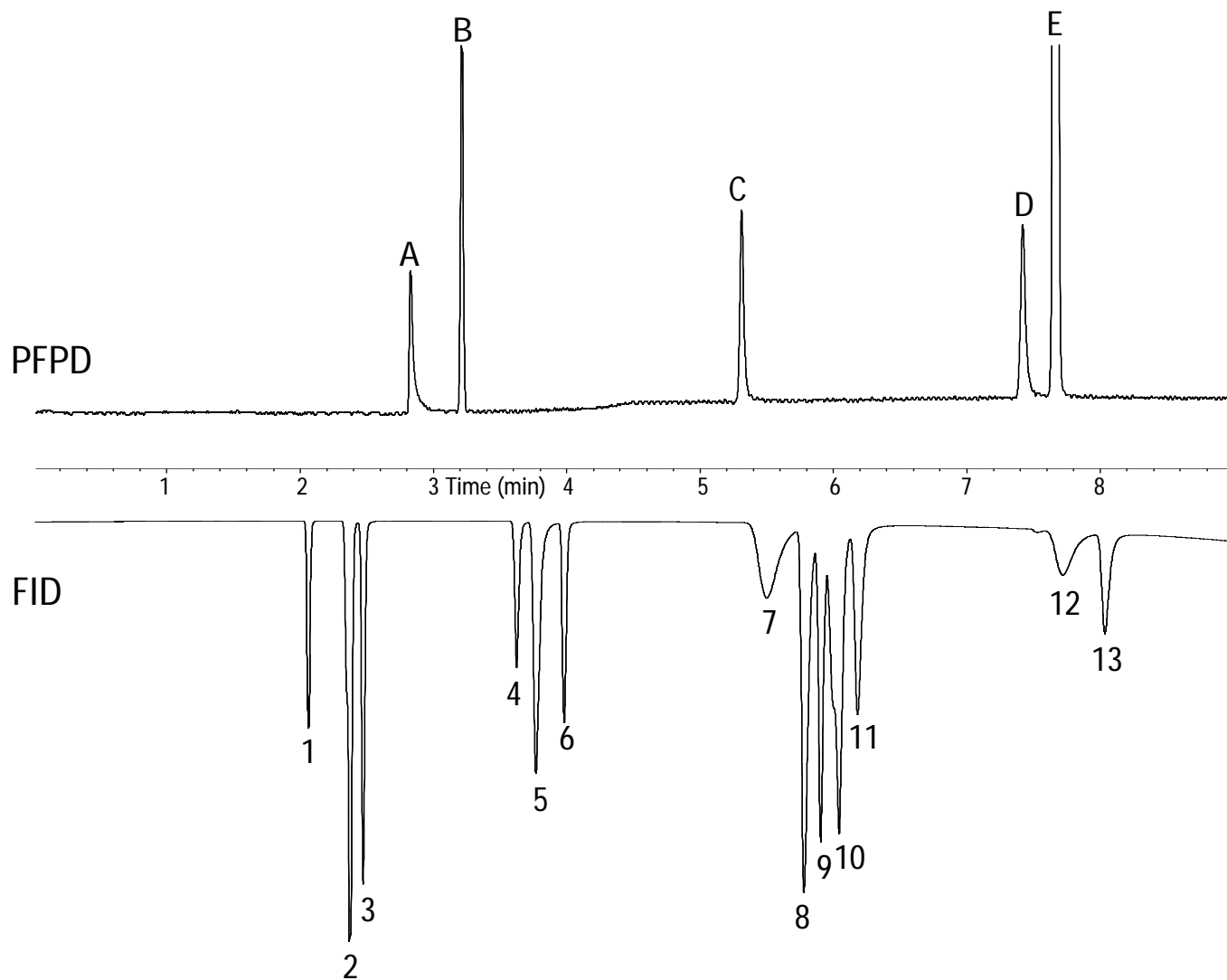


Sulfur Gas Analysis in Light Hydrocarbon Streams

Column: GS-Q
30 m x 0.32 mm I.D.
P/N: 113-3432
Injector: 200°C, 1:20 split
Carrier: Helium, 10 psig, 1.7 mL / min @ 100°C
Oven: 100°C for 2 min, 20°/min to 250°C and hold



Sulfur compounds (PFPD)

- A. Hydrogen sulfide
- B. Carbonyl sulfide
- C. Methyl mercaptan
- D. Ethyl mercaptan
- E. Carbon disulfide

Hydrocarbons (FID)

- 1. Methane
- 2. Ethylene/Acetylene
- 3. Ethane
- 4. Propylene
- 5. Propane
- 6. Methyl acetylene
- 7. iso-Butane
- 8. 1-Butene
- 9. 1,3-Butadiene
- 10. n-Butane/*cis*-2-Butene
- 11. *trans*-2-Butene
- 12. iso-Pentane
- 13. n-Pentane