

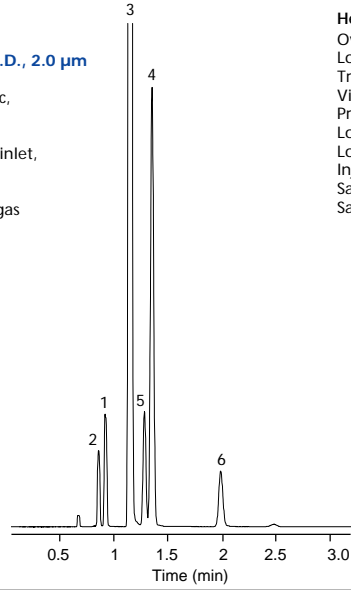
Blood Alcohols (Static Headspace/Split)

Column: DB-ALC2
30 m x 0.53 mm I.D., 2.0 µm
J&W P/N: 125-9234
Carrier: Helium at 80 cm/sec,
measured at 40°C
Oven: 40°C Isothermal
Injector: Headspace to split inlet,
Split 1:10, 250°C
Detector: FID, 300°C
Nitrogen makeup gas
at 23 mL/min

Headspace Conditions

Oven: 70°C
Loop: 80°C
Transfer Line: 90°C
Vial Equil. Time: 10 min
Pressurization Time: 0.20 min
Loop Fill Time: 0.20 min
Loop Equil. Time: 0.05 min
Inject Time: 0.1 - 0.2 min
Sample Loop Size: 1.0 mL
Sample Composition: 0.1% Ethanol,
0.001% Others

1. Methanol
2. Acetaldehyde
3. Ethanol
4. Isopropanol
5. Acetone
6. 1-Propanol



C671