

### Blood Alcohols (Static Headspace/Split)

**Column:** DB-ALC1  
30 m x 0.53 mm I.D., 3.0 mm

**J&W P/N:** 125-9134  
**Carrier:** Helium at 80 cm/sec,  
measured at 40°C

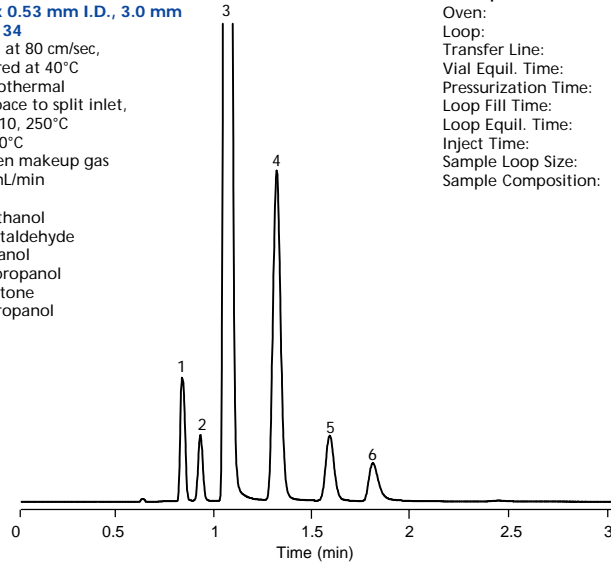
**Oven:** 40°C Isothermal  
**Injector:** Headspace to split inlet,  
Split 1:10, 250°C

**Detector:** FID, 300°C  
Nitrogen makeup gas  
at 23 mL/min

1. Methanol
2. Acetaldehyde
3. Ethanol
4. Isopropanol
5. Acetone
6. 1-Propanol

#### Headspace Conditions

Oven: 70°C  
Loop: 80°C  
Transfer Line: 90°C  
Vial Equil. Time: 10 min  
Pressurization Time: 0.20 min  
Loop Fill Time: 0.20 min  
Loop Equil. Time: 0.05 min  
Inject Time: 0.1 - 0.2 min  
Sample Loop Size: 1.0 mL  
Sample Composition: 0.1% Ethanol,  
0.001% Others



C670