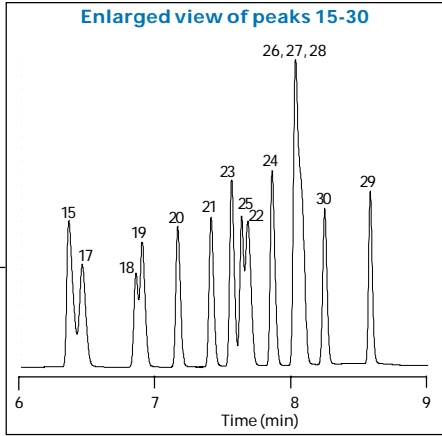


Ozone Precursor Analysis on GS-Alumina and GS-GasPro

Column: GS-Alumina
 30 m x 0.53 mm I.D.
P/N: 115-3532
 Carrier: Helium at 52 cm/sec (6.7 mL/min),
 measured at 100°C
 Oven:
 100°C for 1 min
 100-140°C at 8°/min
 140°C for 0.5 min
 140-200°C at 30°/min
 Injector:
 Split 1:8, 250°C
 300 µL injection of 100 ppm V
 SUMMA cannister mixture
 Detector:
 FID, 275°C
 Nitrogen makeup gas at 29 mL/min



(not all peaks shown)

1. Methane
2. Ethane
3. Ethylene
4. Propane
5. Propylene
6. Isobutane
7. Acetylene
8. *n*-Butane
9. *trans*-2-Butene
10. 1-Butene
11. *cis*-2-Butene
12. Cyclopentane
13. Isopentane
14. *n*-Pentane
15. Propyne
16. 1,3-Butadiene
17. Cyclopentene
18. 3-Methyl-1-butene
19. *trans*-2-Pentene
20. 2-Methyl-2-butene
21. 1-Pentene
22. *cis*-2-Pentene
23. Methylcyclopentane
24. 2,2-Dimethylbutane
25. Cyclohexane
26. 2,3-Dimethylbutane

