

## Purgeables Analysis Without Cryofocusing (EPA Method 502.2)

**Column:** DB-502.2

105 m x 0.53 mm I.D., 3.0 µm

**J&W P/N:** 125-14A4

**Carrier:** Helium at 10 mL/min, measured at 35°C

**Oven:** 35°C for 10 min

35-200°C at 4°/min

200°C for 5 min

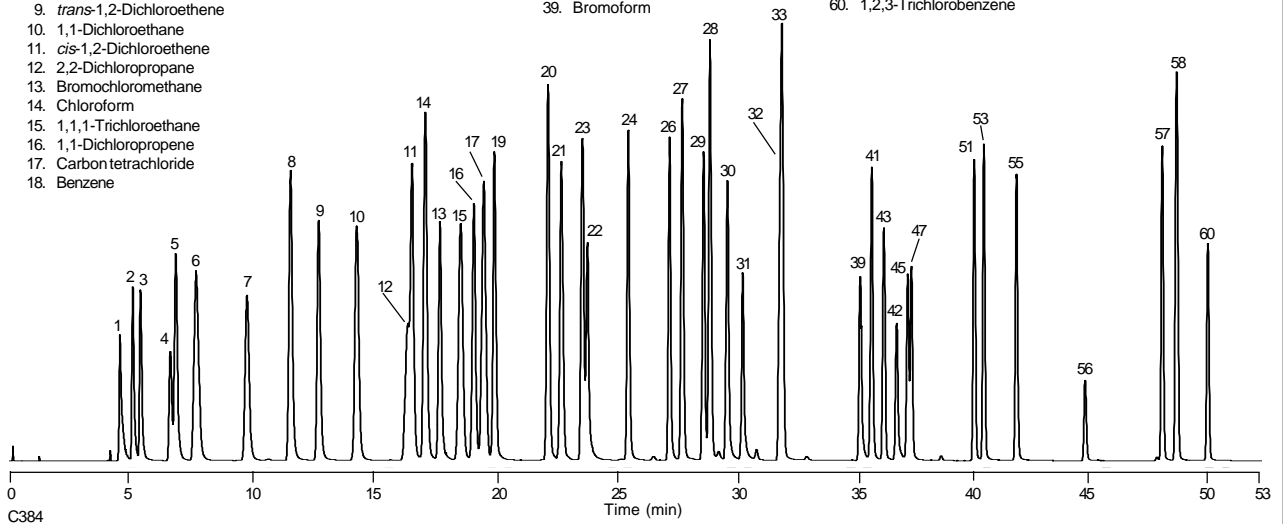
**Injector:** Purge and trap (O.I.A. 4560)

40 ppb per component in 5 mL water

**Trap:** Tenax/Silica Gel/Charcoal

**Detector:** ELCD (O.I.A. 4420), with NiCat reaction tube in the halogen mode, 950°C reactor temperature.

- |                                     |                                       |                                 |
|-------------------------------------|---------------------------------------|---------------------------------|
| 1. Dichlorodifluoromethane          | 19. 1,2-Dichloroethane                | 40. Isopropylbenzene            |
| 2. Chloromethane                    | 20. Trichloroethene                   | 41. 1,1,2,2-Tetrachloroethane   |
| 3. Vinyl chloride                   | 21. 1,2-Dichloropropane               | 42. Bromobenzene                |
| 4. Bromomethane                     | 22. Dibromomethane                    | 43. 1,2,3-Trichloropropane      |
| 5. Chloroethane                     | 23. Bromodichloromethane              | 44. <i>n</i> -Propylbenzene     |
| 6. Trichlorofluoromethane           | 24. <i>cis</i> -1,3-Dichloropropene   | 45. 2-Chlorotoluene             |
| 7. 1,1-Dichloroethene               | 25. Toluene                           | 46. 1,3,5-Trimethylbenzene      |
| 8. Methylene chloride               | 26. <i>trans</i> -1,3-Dichloropropene | 47. 4-Chlorotoluene             |
| 9. <i>trans</i> -1,2-Dichloroethane | 27. 1,1,2-Trichloroethane             | 48. <i>tert</i> -Butylbenzene   |
| 10. 1,1-Dichloroethane              | 28. Tetrachloroethene                 | 49. 1,2,4-Trimethylbenzene      |
| 11. <i>cis</i> -1,2-Dichloroethene  | 29. 1,3-Dichloropropane               | 50. <i>sec</i> -Butylbenzene    |
| 12. 2,2-Dichloropropane             | 30. Dibromochloromethane              | 51. 1,3-Dichlorobenzene         |
| 13. Bromochloromethane              | 31. 1,2-Dibromoethane                 | 52. <i>p</i> -Isopropyltoluene  |
| 14. Chloroform                      | 32. Chlorobenzene                     | 53. 1,4-Dichlorobenzene         |
| 15. 1,1,1-Trichloroethane           | 33. 1,1,1,2-Tetrachloroethane         | 54. <i>n</i> -Butylbenzene      |
| 16. 1,1-Dichloropropene             | 34. Ethylbenzene                      | 55. 1,2-Dichlorobenzene         |
| 17. Carbon tetrachloride            | 35. <i>m</i> -Xylene                  | 56. 1,2-Dibromo-3-chloropropane |
| 18. Benzene                         | 36. <i>p</i> -Xylene                  | 57. 1,2,4-Trichlorobenzene      |
|                                     | 37. <i>o</i> -Xylene                  | 58. Hexachlorobutadiene         |
|                                     | 38. Styrene                           | 59. Naphthalene                 |
|                                     | 39. Bromoform                         | 60. 1,2,3-Trichlorobenzene      |



C384