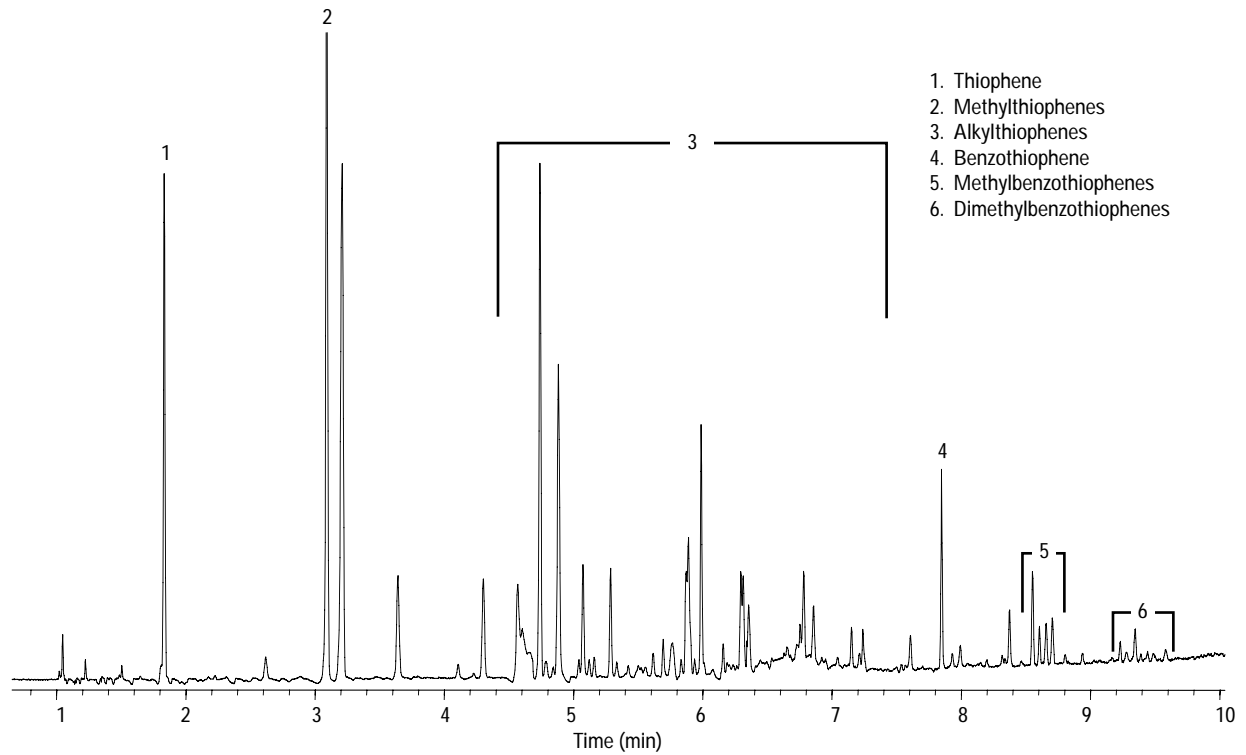


Sulfur in Gasoline

Column: HP-5
30 m x 0.25 mm id, 0.25µm
Part Number: 19091J-433
Carrier: Helium, 2.5 mL/min (constant flow mode)
Oven: 40°C for 4 minutes
40-250°C at 20°C/min
250°C hold for 1 min
Inlet: Split/Splitless 250°C, Split 1:50
Sample: 1 µL
Detector: Agilent 7500a ICP-MS
Transfer line: 250°C

ICP-MS Conditions
ShieldTorch: Long-life shield installed
Forward power: 700 Watts
Sample depth: 13 mm
Carrier gas flow: 1.1 L/min
Extract 1: -150 V
Extract 2: -75 V
Aux gas: He, 10 mL/min added to Ar carrier
Injector: 260°C



C1144

AccuStandard ASTM-FUEL-QCS-01, CARB Low Sulfur RFG QC Sample, ~55ppm total sulfur
Agilent 6890/7500a GC/ICP-MS