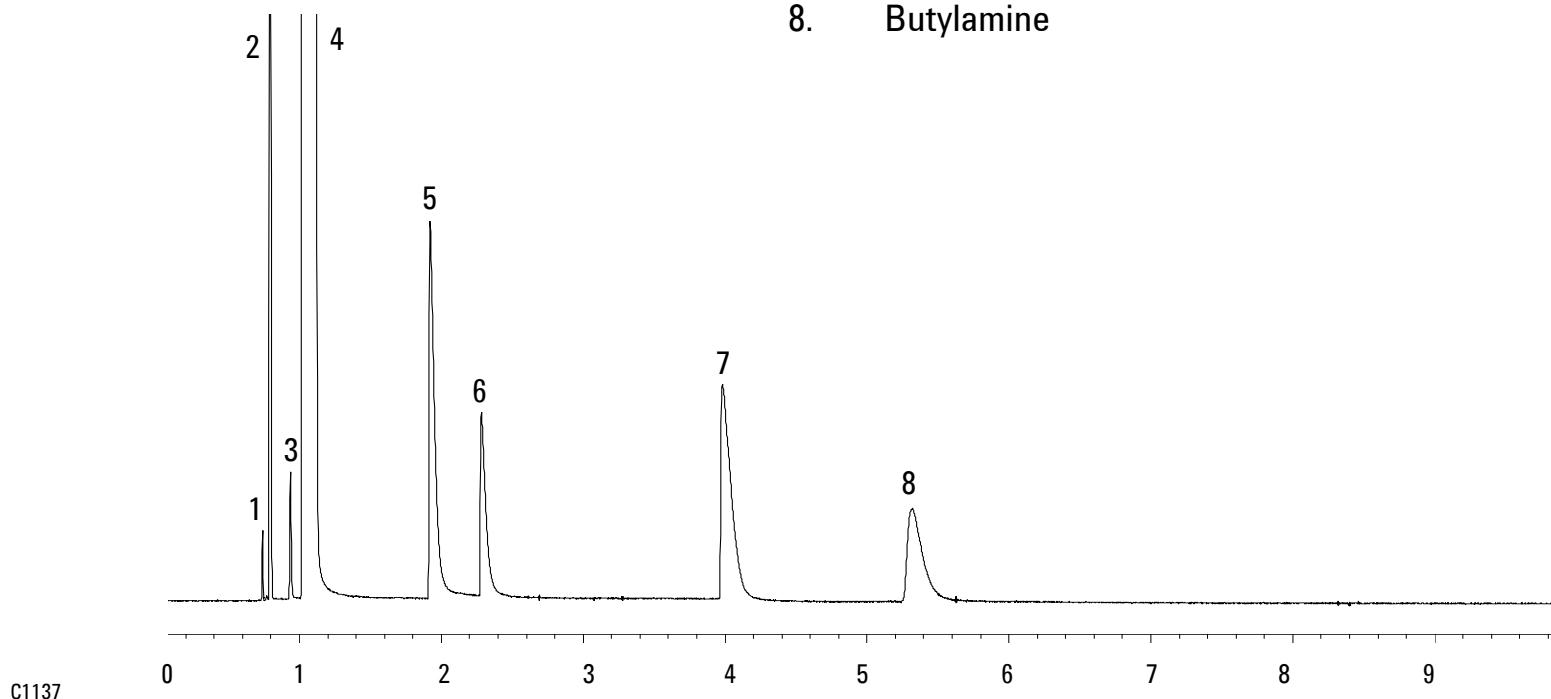


Volatile Primary Amines

Column: HP-PLOT U
0.53 mm x 30 m I.D., 20 µm.
P/N: 19095P-U04
Oven: 150°C for 1 min
150-190°C at 10°C/min
190°C for 5 min
Carrier: Hydrogen, 7mL/min
Inlet: 180°C, Split ratio 30:1
Detector: TCD 200°C
Sample: 2 µL amines in methanol, 1-10%.

1. Air
2. Ammonia
3. Water
4. Methanol
5. Isopropylamine
6. Triethylamine
7. Propylamine
8. Butylamine



C1137