

# Sherry Sample (SPME)

## DB-624

60 m x .25 mm I.D. x 1.4  $\mu$ m

Inlet: 250°C, split

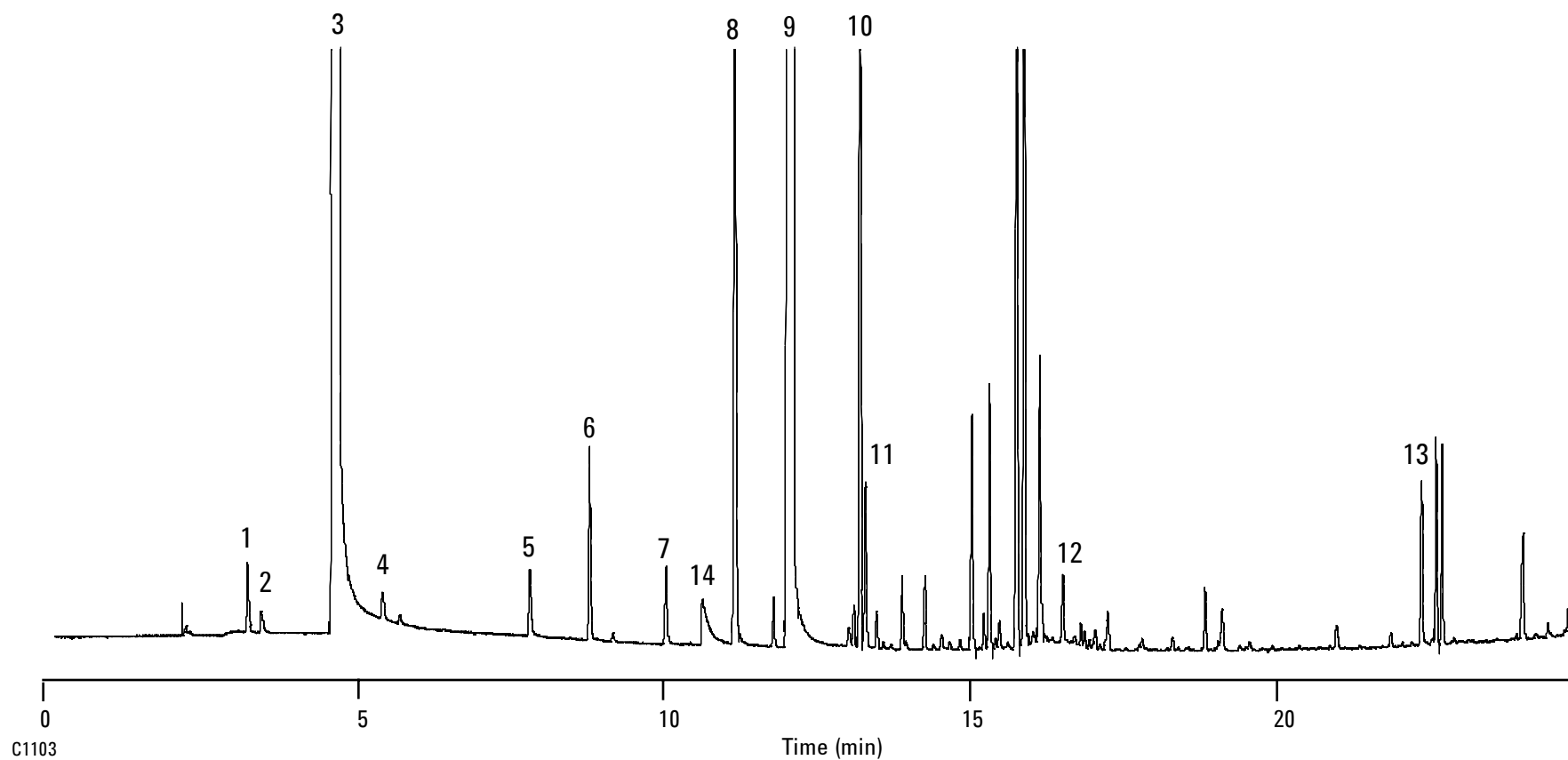
FID: 300°C

Carrier: H<sub>2</sub>, 50 cm/sec

Oven: 40°C for 5 min.

10°C/min to 250°C

- |                  |  |
|------------------|--|
| 1. acetaldehyde  | 8. 1-butanol                               |
| 2. methanol      | 9. 3-pentanol (IS)                         |
| 3. ethanol       | 10. 3-methyl-butanol (isoamyl alcohol)     |
| 4. acetone       | 11. 2-methyl-butanol (active amyl alcohol) |
| 5. 1-propanol    | 12. hexanol                                |
| 6. ethyl acetate | 13. phenylethanol                          |
| 7. isobutanol    | 14. acetic acid                            |



C1103

B-0457