

Sherry Sample

DB-624

60 m x .25 mm I.D. x 1.4 μ m

Inlet: 250°C, split

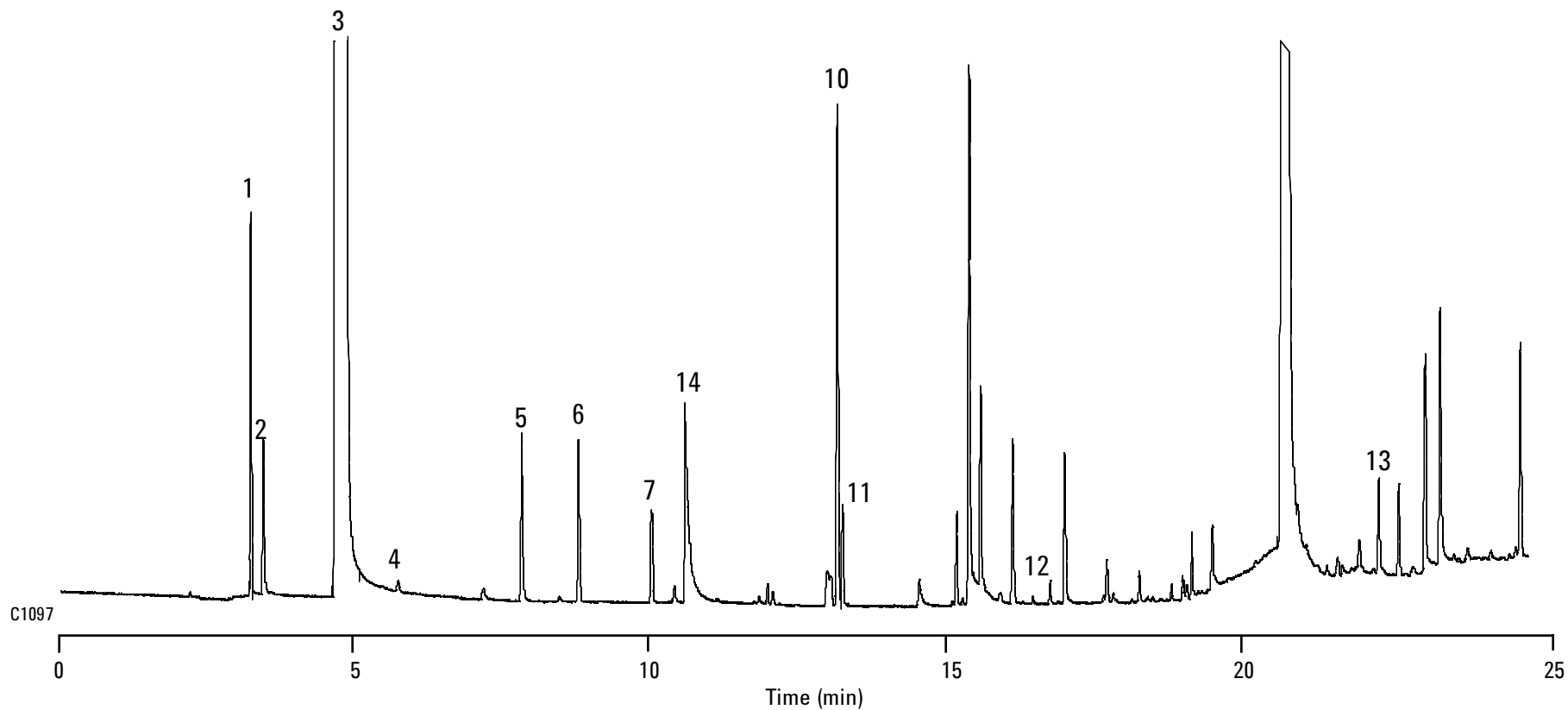
FID: 300°C

Carrier: H₂, 50 cm/sec

Oven: 40°C for 5 min.

10°C/min to 250°C

- | | |
|------------------|--|
| 1. acetaldehyde | 8. 1-butanol |
| 2. methanol | 9. 3-pentanol (IS) |
| 3. ethanol | 10. 3-methyl-butanol (isoamyl alcohol) |
| 4. acetone | 11. 2-methyl-butanol (active amyl alcohol) |
| 5. 1-propanol | 12. hexanol |
| 6. ethyl acetate | 13. phenylethanol |
| 7. isobutanol | 14. acetic acid |



C1097