

# Phenols

Column: **DB-5ms**  
30 m x 0.25 mm I.D., 0.25 µm

P/N: 122-5532

Column: **DB-XLB**  
30 m x 0.25 mm I.D., 0.25 µm

P/N: 122-1232

Carrier: He at 1.2 ml/min Constant Flow

Oven: 40°C for 2.00 min  
40-100°C at 40°C/min  
100°C for 0.50 min

100-140°C at 2°C/min

140-340°C at 30°C/min

Injector: Pulsed Splitless, 200°C

Pulse Pressure & Time: 25.0 psi for 1.00 min

Purge Flow & Time: 50.0 ml/min for 0.25 min

Gas Saver Flow & Time: 20.0 ml/min for 3.00 min

Detector: MSD

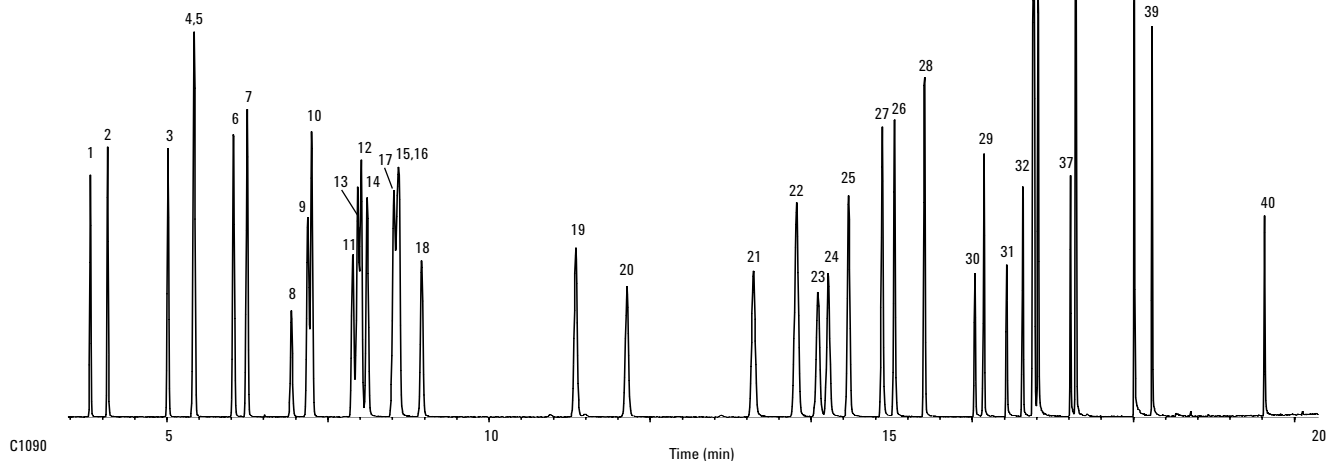
Transfer Line Temp at 320°C

Quadrupole at 150°C

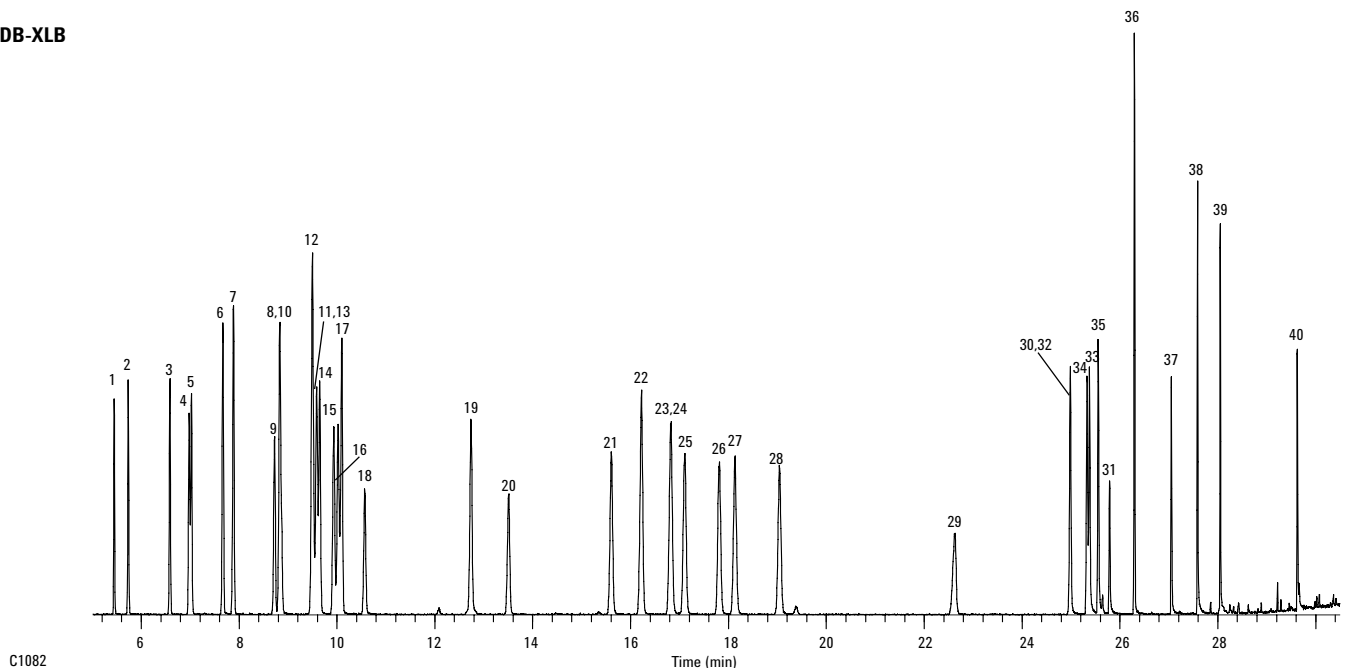
Source at 230°C

1. Phenol
2. 2-Chlorophenol
3. 2-Methylphenol
4. 4-Methylphenol
5. 3-Methylphenol
6. 2-Chloro-5-methylphenol
7. 2,6-Dimethylphenol
8. 2-Nitrophenol
9. 2,4-Dimethylphenol
10. 2,5-Dimethylphenol
11. 2,4-Dichlorophenol
12. 2,3-Dimethylphenol
13. 2,5-Dichlorophenol
14. 2,3-Dichlorophenol
15. 2-Chlorophenol
16. 4-Chlorophenol
17. 3,4-Dimethylphenol
18. 2,6-Dichlorophenol
19. 4-Chloro-2-methylphenol
20. 4-Chloro-3-methylphenol
21. 2,3,5-Trichlorophenol
22. 2,4-Dibromophenol
23. 2,4,6-Trichlorophenol
24. 2,4,5-Trichlorophenol
25. 2,3,4-Trichlorophenol
26. 3,5-Dichlorophenol
27. 2,3,6-Trichlorophenol
28. 3,4-Dichlorophenol
29. 3-Nitrophenol
30. 2,5-Dinitrophenol
31. 2,4-Dinitrophenol
32. 4-Nitrophenol
33. 2,3,5,6-Tetrachlorophenol
34. 2,3,4,5-Tetrachlorophenol
35. 2,3,4,6-Tetrachlorophenol
36. 3,4,5-Trichlorophenol
37. 2-Methyl-4,6-dinitrophenol
38. Pentachlorophenol
39. Dinoseb
40. 2-Cyclohexyl-4,6-dinitrophenol

## DB-5ms



## DB-XLB



**EPA 552.2**

**DB-35ms**

30m x 0.32 mm I.D., 0.25 µm film thickness  
P/N: 123-3832

**DB-XLB**

30 m x 0.32 mm I.D., 0.50 µm film thickness  
P/N: 123-1236

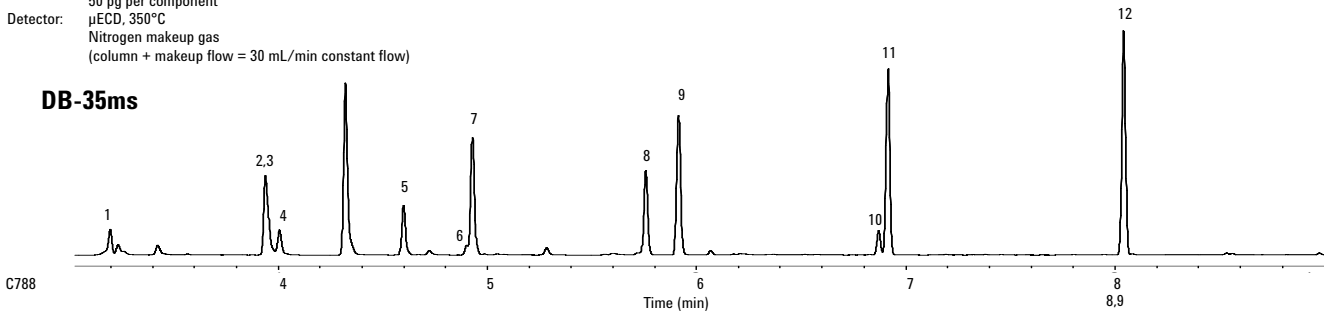
Carrier: Helium at 45 cm/sec (EPC in constant flow mode)  
Oven: 40°C for 0.5 min  
40-200°C at 15°C/min  
200°C for 2 min

Injector: Splitless, 250°C  
30 sec purge activation time  
50 pg per component

Detector: µECD, 350°C  
Nitrogen makeup gas  
(column + makeup flow = 30 mL/min constant flow)

- 1. Chloroacetic acid
- 2. Bromoacetic acid
- 3. Dichloroacetic acid
- 4. Dalapon
- 5. Trichloroacetic acid
- 6. 1,2,3-Trichloropropane (IS)
- 7. Bromochloroacetic acid
- 8. Bromodichloroacetic acid
- 9. Dibromoacetic acid
- 10. 2,3-Dibromopropionic acid (SS)
- 11. Chlorodibromoacetic
- 12. Tribromoacetic acid

**DB-35ms**



**DB-XLB**

