

EPA Air Analysis Method TO-15 (10 ppbV Standard)

Column: DB-5ms

60 m x 0.32 mm I.D., 1.0 µm

P/N: 123-5563

Carrier: Helium, 1.5 mL/min

Oven: 35°C for 5 min

35-140°C at 6°C/min

140-220°C at 15°C/min

220°C for 3 min

Injector: Entech 7100 cryogenic

sample preconcentrator

Detector: GC/MS 6890/5973 N

Scan 29-180 amu 0-6 min

33-280 amu 6-30 min

Electron Impact 70 eV

Sample: 400 mL sample load,

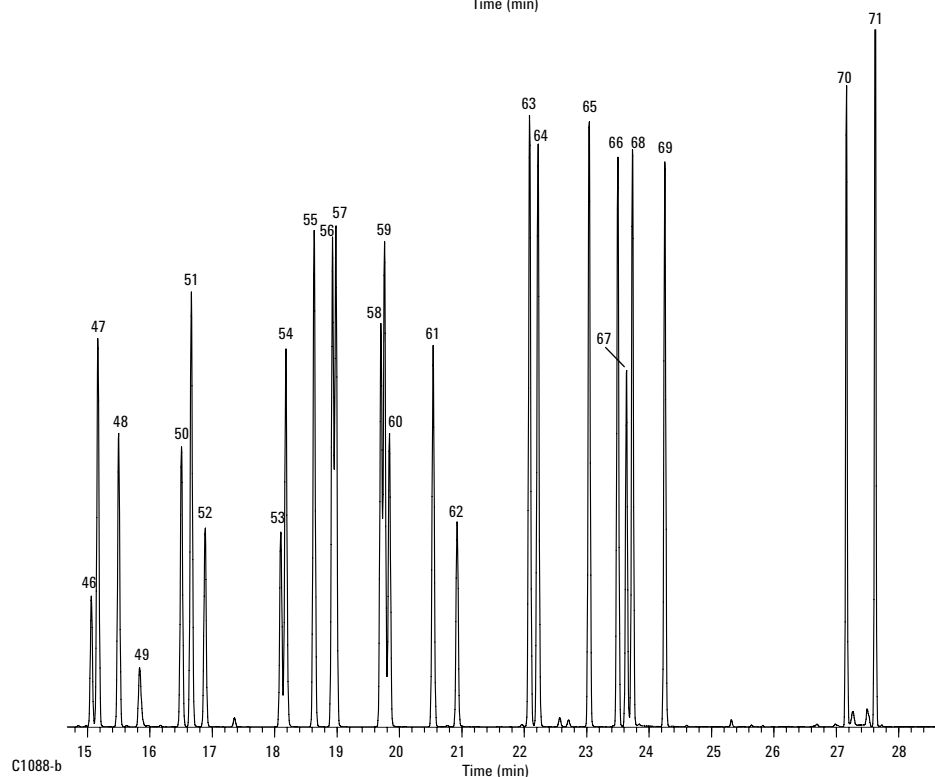
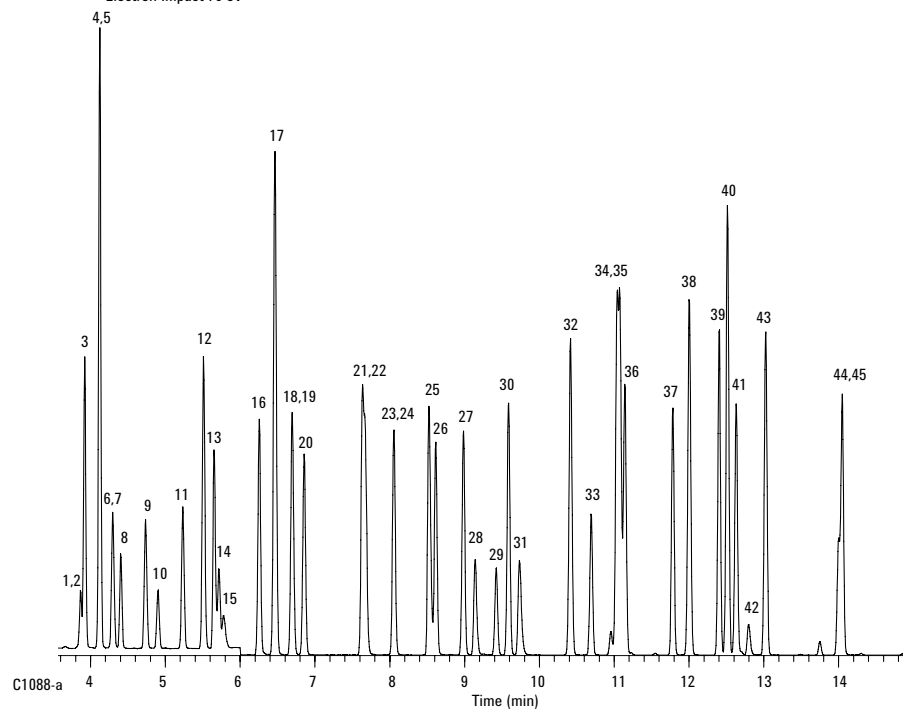
All compounds at 10 ppbV except

Formaldehyde (50 ppbV), Acetaldehyde (20 ppbV),

Propanol (20 ppbV), Acetone (30 ppbV),

2-Butanone (30 ppbV)

Peak #	Compound Name	Quantitation Ion
1.	Formaldehyde	30
2.	Propene	41
3.	Dichlorodifluoromethane	85
4.	Chloromethane	50
5.	Dichlorotetrafluoroethane	85
6.	Acetaldehyde	29
7.	Vinyl chloride	62
8.	1,3-Butadiene	39
9.	Bromomethane	94
10.	Chloroethane	64
11.	Bromoethene	106
12.	Trichlorofluoromethane	101
13.	Acetone	58
14.	Propanal	29
15.	Isopropyl alcohol	45
16.	1,1-Dichloroethene	61
17.	1,1,2-Trichloro-1,2,2-trifluoroethane	101
18.	Methylene chloride	49
19.	3-Chloro-1-propene (Allyl chloride)	76
20.	Carbon disulfide	76
21.	<i>trans</i> -1,2-Dichloroethene	96
22.	<i>tert</i> -Butyl methyl ether (MTBE)	73
23.	1,1-Dichloroethane	63
24.	Vinyl acetate	43
25.	2-Butanone (MEK)	72
26.	<i>n</i> -Hexane	57
27.	<i>cis</i> -1,2-Dichloroethene	96
28.	Ethyl acetate	43
29.	Bromochloromethane <ISTD>	128
30.	Chloroform	83
31.	Tetrahydrofuran	42
32.	1,1,1-Trichloroethane	97
33.	1,2-Dichloroethane	62
34.	Benzene	78
35.	Carbon tetrachloride	117
36.	Cyclohexane	56
37.	1,4-Difluorobenzene <ISTD>	114
38.	2,2,4-Trimethylpentane (Isooctane)	57
39.	<i>n</i> -Heptane	41
40.	Trichloroethene	130
41.	1,2-Dichloropropane	63
42.	1,4-Dioxane	88
43.	Bromodichloromethane	83
44.	4-Methyl-2-pentanone (MIBK)	43
45.	<i>cis</i> -1,3-Dichloropropene	75
46.	<i>trans</i> -1,3-Dichloropropene	75
47.	Toluene	91
48.	1,1,2-Trichloroethane	97
49.	2-Hexanone	43
50.	Dibromochloromethane	129
51.	Tetrachloroethene	166
52.	1,2-Dibromoethane	107
53.	Chlorobenzene-d5 <ISTD>	117
54.	Chlorobenzene	112
55.	Ethylbenzene	91
56.	<i>m</i> -Xylene	91
57.	<i>p</i> -Xylene	91
58.	Styrene	104
59.	<i>o</i> -Xylene	91
60.	Bromoform	173
61.	1,1,2,2-Tetrachloroethane	83
62.	4-Bromofluorobenzene <SMC>	95
63.	4-Ethyltoluene	105
64.	1,3,5-Trimethylbenzene	105
65.	1,2,4-Trimethylbenzene	105
66.	1,3-Dichlorobenzene	146
67.	Benzyl chloride	91
68.	1,4-Dichlorobenzene	146
69.	1,2-Dichlorobenzene	146
70.	1,2,4-Trichlorobenzene	180
71.	Hexachlorobutadiene	225



Agilent wishes to thank Entech Instruments for providing this chromatogram.